

Appendix A: Land Use Assumptions Update Technical Data

TABLE A-1:
Kane County Updated Land Use Assumptions by Transportation Analysis Zone (TAZ)
2003, 2013, and 2023 Households

Service Area	KCTAZ	HOUSEHOLDS				
		2003	2013	2013-2003 CHANGE	2023	2023-2003 CHANGE
Southwest	1	20	21	2	23	4
Southwest	2	49	60	11	72	22
Southwest	3	54	60	6	65	12
Southwest	4	32	34	2	36	5
Southwest	5	5	13	9	22	17
Southwest	6	5	14	9	22	18
Southwest	7	22	17	-6	11	-11
Southwest	8	41	48	7	56	14
Southwest	9	33	36	3	39	6
Southwest	10	36	39	3	43	7
Southwest	11	139	153	14	166	27
Southwest	12	6	8	2	10	5
Southwest	13	158	170	11	181	23
Southwest	14	82	86	4	91	8
Southwest	15	21	25	4	29	8
Southwest	16	20	23	3	26	6
Southwest	17	23	26	3	28	6
West Central	18	22	22	0	21	-1
Southwest	19	21	25	4	29	8
Southwest	20	20	24	4	27	7
West Central	21	110	134	24	157	47
Southwest	22	3	4	1	5	2
Southwest	23	174	189	16	205	32
West Central	24	29	38	10	48	19
West Central	25	34	36	1	37	3
Southwest	26	8	7	0	7	-1
Southwest	27	9	10	2	12	4
West Central	28	286	308	21	329	43
West Central	29	32	31	-1	30	-1
West Central	30	54	54	0	53	-1
West Central	31	22	23	1	23	1
West Central	32	72	93	21	113	41
West Central	33	58	65	7	71	13
West Central	34	87	87	0	87	0
West Central	35	65	68	3	71	6
West Central	36	39	41	2	43	4
West Central	37	32	34	2	35	4
Northwest	38	26	27	1	27	1
Northwest	39	36	37	1	38	2
West Central	40	20	21	1	21	1
Northwest	41	92	94	2	96	5
Northwest	42	59	80	21	101	42
Northwest	43	43	50	7	57	14
Northwest	44	136	147	11	157	21
Northwest	45	18	19	0	19	1

Service Area	KCTAZ	HOUSEHOLDS				
		2003	2013	2013-2003 CHANGE	2023	2023-2003 CHANGE
West Central	46	79	82	3	85	6
Northwest	47	71	64	-7	57	-14
Northwest	48	46	48	2	50	5
Northwest	49	68	73	5	78	9
Northwest	50	18	19	2	21	4
Northwest	51	51	52	1	52	1
Northwest	52	26	24	-2	22	-3
Northwest	53	20	29	9	38	18
Northwest	54	9	17	8	25	16
Northwest	55	22	27	5	32	10
Northwest	56	169	130	-39	91	-78
Northwest	57	145	224	78	302	157
Northwest	58	54	181	127	308	254
Northwest	59	128	137	9	147	19
Northwest	60	10	17	7	23	13
Northwest	61	4	4	0	4	0
Northwest	62	465	463	-3	460	-5
Northwest	63	0	0	0	0	0
Northwest	64	3	2	-1	1	-2
Northwest	65	242	308	66	374	132
Northwest	66	116	297	182	479	364
Northwest	67	143	291	148	440	296
Northwest	68	102	133	32	165	64
Northwest	69	9	11	1	12	3
Northwest	70	1	0	0	0	-1
Northwest	71	0	1	0	1	1
Northwest	72	2	1	0	1	-1
Northwest	73	1	0	0	0	-1
Northwest	74	1	2	1	3	2
Northwest	75	11	15	4	19	8
Southwest	76	25	28	3	30	5
Southwest	77	115	179	64	243	128
Southwest	78	0	1	0	1	1
Southwest	79	5	14	8	22	17
Southwest	80	52	53	1	54	2
Southwest	81	62	220	159	379	317
Southwest	82	42	70	27	97	55
Southwest	83	2	2	0	2	0
Southwest	84	8	8	0	8	0
Southwest	85	11	20	8	28	17
Southwest	86	3	3	0	3	0
Southwest	87	26	38	13	51	25
Southwest	88	233	776	543	1319	1086
Southwest	89	5	7	3	10	5
Southwest	90	396	439	43	482	86
Southwest	91	107	130	23	153	46
Southwest	92	320	347	27	374	54
Southwest	93	58	222	163	385	327
Southwest	94	76	132	56	188	112

Service Area	KCTAZ	HOUSEHOLDS				
		2003	2013	2013-2003 CHANGE	2023	2023-2003 CHANGE
Southwest	95	20	61	41	102	82
Southwest	96	292	1248	956	2204	1912
Southwest	97	52	58	6	64	12
Southwest	98	234	242	7	249	15
Southwest	99	125	200	74	274	149
Southwest	100	222	255	33	288	66
Southwest	101	98	84	-13	71	-27
Southwest	102	248	473	225	698	450
Southwest	103	526	1903	1377	3280	2754
Southwest	104	47	184	137	321	274
Southwest	105	48	92	43	135	87
Southwest	106	235	653	418	1071	836
Aurora Area	107	14	43	29	72	58
Aurora Area	108	63	74	12	86	23
Aurora Area	109	100	112	12	124	24
Aurora Area	110	233	287	53	340	107
Aurora Area	111	19	24	5	29	10
Aurora Area	112	35	61	26	87	52
Aurora Area	113	308	544	237	781	473
Aurora Area	114	245	149	-96	53	-192
Southwest	115	9	10	2	12	4
West Central	116	3	2	-1	1	-2
West Central	117	24	25	0	25	1
West Central	118	6	7	0	7	1
West Central	119	8	9	2	11	3
West Central	120	2	7	4	11	9
West Central	121	0	0	0	0	0
West Central	122	200	251	52	303	103
West Central	123	160	231	71	302	142
Southwest	124	79	101	23	124	45
West Central	125	132	131	-2	129	-4
West Central	126	51	53	2	55	5
West Central	127	132	131	-1	130	-2
West Central	128	68	201	133	334	266
West Central	129	53	108	55	163	110
West Central	130	270	335	65	400	130
West Central	131	1	2	0	2	1
West Central	132	0	0	0	0	0
West Central	133	41	104	63	167	126
West Central	134	80	81	1	83	2
West Central	135	205	330	124	454	249
Tri-Cities	136	153	404	251	655	502
Tri-Cities	137	16	17	1	17	1
Tri-Cities	138	12	13	1	14	2
Tri-Cities	139	3	3	0	3	0
Tri-Cities	140	1	1	0	1	0
Tri-Cities	141	0	0	0	0	0
Tri-Cities	142	2	2	0	2	0
Tri-Cities	143	80	240	160	400	320

Service Area	KCTAZ	HOUSEHOLDS				
		2003	2013	2013-2003 CHANGE	2023	2023-2003 CHANGE
Tri-Cities	144	9	9	0	9	0
Tri-Cities	145	364	1231	867	2098	1734
Tri-Cities	146	98	49	-49	0	-98
Tri-Cities	147	92	47	-45	2	-90
Tri-Cities	148	89	46	-43	2	-87
Tri-Cities	149	98	51	-47	4	-94
Tri-Cities	150	5	5	0	5	0
West Central	151	27	83	56	139	112
West Central	152	8	10	1	11	3
West Central	153	15	26	10	36	21
West Central	154	120	159	39	198	78
West Central	155	87	168	81	248	161
West Central	156	340	336	-4	332	-8
West Central	157	28	49	22	71	43
West Central	158	17	26	8	34	17
West Central	159	10	42	31	73	63
West Central	160	13	14	1	15	2
West Central	161	137	146	10	156	19
West Central	162	184	194	10	204	20
West Central	163	11	26	15	41	30
Campton Hills	164	43	53	10	63	20
Campton Hills	165	263	263	0	262	-1
Campton Hills	166	427	431	3	434	7
Campton Hills	167	16	33	17	50	34
Campton Hills	168	52	64	12	76	24
West Central	169	111	142	30	172	61
Campton Hills	170	160	171	11	182	22
Campton Hills	171	96	121	25	146	50
Campton Hills	172	148	163	16	179	31
Campton Hills	173	309	322	13	335	26
Campton Hills	174	92	99	7	106	14
Tri-Cities	175	80	111	31	142	62
Campton Hills	176	159	244	85	329	170
Campton Hills	177	39	74	35	109	70
Campton Hills	178	29	55	26	81	52
Campton Hills	179	103	143	40	182	79
Campton Hills	180	46	78	31	109	63
Campton Hills	181	146	170	24	194	47
Campton Hills	182	170	189	18	207	36
Campton Hills	183	35	56	21	77	42
Tri-Cities	184	13	34	21	55	42
Campton Hills	185	250	335	85	420	170
Campton Hills	186	351	493	142	635	283
Campton Hills	187	190	279	89	368	178
Campton Hills	188	164	174	10	183	20
Campton Hills	189	188	213	25	238	49
West Central	190	118	126	8	134	16
West Central	191	0	1	0	1	1
Northwest	192	4	4	0	4	0

Service Area	KCTAZ	HOUSEHOLDS				
		2003	2013	2013-2003 CHANGE	2023	2023-2003 CHANGE
West Central	193	2	2	0	2	0
Northwest	194	1	2	0	2	1
Northwest	195	23	24	1	24	1
Northwest	196	61	66	5	71	9
Campton Hills	197	18	19	1	20	2
Campton Hills	198	12	14	1	15	3
Campton Hills	199	196	203	7	209	13
Campton Hills	200	119	130	11	140	21
Northwest	201	101	105	4	109	8
Campton Hills	202	86	184	98	282	197
Campton Hills	203	168	344	176	520	352
Campton Hills	204	235	382	147	528	293
Northwest	205	147	174	27	201	54
Campton Hills	206	70	190	120	310	240
Campton Hills	207	154	275	120	395	241
Northwest	208	39	43	4	47	8
Northwest	209	49	139	90	228	179
Northwest	210	1485	4179	2694	6873	5388
Northwest	211	21	22	0	22	1
Northwest	212	18	21	3	24	6
Upper Fox	213	42	51	9	60	18
Upper Fox	214	135	169	34	202	67
Northwest	215	23	34	10	44	21
Northwest	216	8	11	3	14	6
Northwest	217	87	290	203	494	407
Northwest	218	73	318	244	562	489
Northwest	219	24	25	1	26	2
Upper Fox	220	508	1338	830	2168	1660
Upper Fox	221	112	150	38	188	76
Upper Fox	222	25	31	6	38	13
Upper Fox	223	37	52	15	67	30
Upper Fox	224	0	0	0	0	0
Upper Fox	225	17	25	9	34	17
Upper Fox	226	45	69	24	93	48
Upper Fox	227	2	2	0	2	0
Upper Fox	228	50	58	9	67	18
Aurora Area	229	320	367	47	414	94
Aurora Area	230	0	2	1	3	3
Aurora Area	231	61	82	22	104	43
Aurora Area	232	0	0	0	0	0
Aurora Area	233	148	223	74	297	149
Aurora Area	234	148	151	3	154	6
Aurora Area	235	207	283	76	359	152
Aurora Area	236	217	232	15	247	30
Aurora Area	237	226	237	11	248	22
Aurora Area	238	103	209	106	315	212
Aurora Area	239	213	241	28	269	56
Aurora Area	240	176	141	-35	106	-70
Aurora Area	241	244	373	130	503	259

Service Area	KCTAZ	HOUSEHOLDS				
		2003	2013	2013-2003 CHANGE	2023	2023-2003 CHANGE
Aurora Area	242	257	373	116	489	232
Aurora Area	243	1398	1439	40	1479	81
Aurora Area	244	405	402	-3	399	-6
Aurora Area	245	6	25	20	45	39
Aurora Area	246	0	0	0	0	0
Aurora Area	247	404	466	63	529	125
Aurora Area	248	0	1	0	1	1
Aurora Area	249	13	45	31	76	63
Aurora Area	250	30	122	92	214	184
Aurora Area	251	34	140	106	247	213
Aurora Area	252	218	256	38	294	76
Aurora Area	253	10	15	5	20	10
Aurora Area	254	0	0	0	0	0
Aurora Area	255	210	224	14	238	28
Aurora Area	256	18	20	3	23	5
Aurora Area	257	99	261	163	424	325
Aurora Area	258	20	22	3	25	5
Aurora Area	259	124	130	6	136	12
Aurora Area	260	401	403	1	404	3
Aurora Area	261	355	360	5	365	10
Aurora Area	262	620	648	27	675	55
Aurora Area	263	559	570	11	581	22
Aurora Area	264	311	312	0	312	1
Aurora Area	265	539	594	55	649	110
Aurora Area	266	348	413	65	478	130
Aurora Area	267	763	792	28	820	57
Aurora Area	268	623	631	9	640	17
Aurora Area	269	6	15	10	25	19
Aurora Area	270	1	1	0	1	0
Aurora Area	271	370	450	80	530	160
Aurora Area	272	98	99	2	101	3
Aurora Area	273	0	0	0	0	0
Aurora Area	274	367	392	26	418	51
Aurora Area	275	0	0	0	0	0
Aurora Area	276	568	632	64	696	128
Aurora Area	277	125	187	63	250	125
Aurora Area	278	181	187	6	193	12
Aurora Area	279	208	196	-12	184	-24
Aurora Area	280	337	355	19	374	37
Aurora Area	281	338	342	3	345	7
Aurora Area	282	201	205	3	208	7
Aurora Area	283	227	229	2	231	4
Aurora Area	284	333	332	0	332	-1
Aurora Area	285	322	330	9	339	17
Aurora Area	286	537	545	8	553	16
Aurora Area	287	367	365	-2	363	-4
Aurora Area	288	801	823	22	845	44
Aurora Area	289	274	286	13	299	25
Aurora Area	290	348	355	7	362	14

Service Area	KCTAZ	HOUSEHOLDS				
		2003	2013	2013-2003 CHANGE	2023	2023-2003 CHANGE
Aurora Area	291	673	688	15	703	30
Aurora Area	292	557	558	1	559	2
Aurora Area	293	681	720	39	759	78
Aurora Area	294	152	191	38	229	77
Aurora Area	295	7	8	1	9	2
Aurora Area	296	26	37	11	48	22
Aurora Area	297	19	50	32	82	63
Aurora Area	298	467	464	-3	461	-6
Aurora Area	299	27	36	9	45	18
Aurora Area	300	244	239	-6	233	-11
Aurora Area	301	305	355	50	405	100
Aurora Area	302	466	472	6	478	12
Aurora Area	303	104	109	6	115	11
Aurora Area	304	438	457	18	475	37
Aurora Area	305	788	804	17	821	33
Aurora Area	306	850	889	38	927	77
Aurora Area	307	786	795	10	805	19
Aurora Area	308	905	933	28	961	56
Aurora Area	309	237	202	-34	168	-69
Aurora Area	310	619	635	16	651	32
Aurora Area	311	739	782	43	825	86
Aurora Area	312	204	213	8	221	17
Aurora Area	313	649	664	15	679	30
Aurora Area	314	206	244	38	282	76
Aurora Area	315	354	361	7	368	14
Aurora Area	316	233	244	12	256	23
Aurora Area	317	19	54	35	89	70
Aurora Area	318	20	28	8	36	16
Aurora Area	319	33	34	0	34	1
Aurora Area	320	139	143	4	147	8
Aurora Area	321	310	412	103	515	205
Aurora Area	322	289	317	29	346	57
Aurora Area	323	195	190	-6	184	-11
Aurora Area	324	2	11	8	19	17
Aurora Area	325	66	77	12	89	23
Aurora Area	326	156	158	2	160	4
Aurora Area	327	839	885	47	932	93
Aurora Area	328	456	463	7	470	14
Aurora Area	329	462	473	11	484	22
Aurora Area	330	713	732	18	750	37
Aurora Area	331	569	583	14	597	28
Aurora Area	332	659	663	3	666	7
Aurora Area	333	589	595	6	601	12
Aurora Area	334	480	484	4	488	8
Aurora Area	335	491	497	6	503	12
Aurora Area	336	286	314	28	342	56
Aurora Area	337	439	438	-2	436	-3
Aurora Area	338	166	175	10	185	19
Aurora Area	339	214	223	9	232	18

Service Area	KCTAZ	HOUSEHOLDS				
		2003	2013	2013-2003 CHANGE	2023	2023-2003 CHANGE
Aurora Area	340	370	419	48	467	97
Aurora Area	341	584	606	23	629	45
Aurora Area	342	29	30	2	32	3
Aurora Area	343	0	0	0	0	0
Aurora Area	344	215	445	230	675	460
Aurora Area	345	228	259	31	290	62
Aurora Area	346	424	527	103	630	206
Aurora Area	347	155	539	383	922	767
Aurora Area	348	52	64	13	77	25
Aurora Area	349	179	334	155	489	310
Aurora Area	350	1	2	0	2	1
Aurora Area	351	207	217	10	227	20
Aurora Area	352	326	346	20	366	40
Aurora Area	353	16	18	2	20	4
Aurora Area	354	23	25	2	27	4
Aurora Area	355	19	24	4	28	9
Aurora Area	356	158	209	52	261	103
Aurora Area	357	10	14	3	17	7
Aurora Area	358	71	179	108	287	216
Aurora Area	359	169	240	71	311	142
Aurora Area	360	492	544	53	597	105
Aurora Area	361	61	237	177	414	353
Aurora Area	362	266	270	4	274	8
Aurora Area	363	36	55	20	75	39
Aurora Area	364	36	37	0	37	1
Aurora Area	365	0	0	0	0	0
Aurora Area	366	37	31	-6	25	-12
Tri-Cities	367	107	176	68	244	137
Tri-Cities	368	104	128	24	151	47
Tri-Cities	369	78	103	24	127	49
Tri-Cities	370	44	72	28	100	57
Tri-Cities	371	41	39	-2	37	-4
Tri-Cities	372	95	96	1	97	2
Tri-Cities	373	346	521	175	696	350
Tri-Cities	374	78	121	43	163	86
Tri-Cities	375	35	76	41	117	81
Tri-Cities	376	26	51	25	76	49
Tri-Cities	377	3	2	0	2	-1
Tri-Cities	378	36	137	100	237	201
Tri-Cities	379	42	46	4	50	8
Tri-Cities	380	9	28	18	46	37
Tri-Cities	381	252	195	-57	138	-114
Tri-Cities	382	87	207	120	327	240
Tri-Cities	383	9	10	0	10	1
Tri-Cities	384	51	69	19	88	38
Tri-Cities	385	9	9	0	9	0
Tri-Cities	386	21	74	53	127	106
Tri-Cities	387	16	38	23	61	45
Tri-Cities	388	276	281	5	286	10

Service Area	KCTAZ	HOUSEHOLDS				
		2003	2013	2013-2003 CHANGE	2023	2023-2003 CHANGE
Tri-Cities	389	439	437	-2	436	-3
Tri-Cities	390	23	14	-10	4	-19
Tri-Cities	391	22	13	-10	3	-19
Tri-Cities	392	19	61	41	102	83
Tri-Cities	393	109	471	363	834	725
Aurora Area	394	254	340	87	427	173
Tri-Cities	395	5	6	0	6	1
Aurora Area	396	196	200	4	204	8
Tri-Cities	397	3	4	0	4	1
Tri-Cities	398	1	3	3	6	5
Tri-Cities	399	67	67	0	67	0
Tri-Cities	400	8	8	0	9	1
Tri-Cities	401	346	322	-24	299	-47
Tri-Cities	402	10	13	3	16	6
Tri-Cities	403	228	217	-12	205	-24
Tri-Cities	404	153	154	2	156	4
Tri-Cities	405	651	671	20	691	40
Tri-Cities	406	277	284	7	291	14
Tri-Cities	407	32	64	33	97	65
Tri-Cities	408	473	454	-19	435	-38
Tri-Cities	409	196	207	12	219	24
Tri-Cities	410	325	484	159	643	318
Tri-Cities	411	54	49	-6	43	-11
Tri-Cities	412	410	538	128	666	257
Tri-Cities	413	26	18	-8	10	-17
Tri-Cities	414	406	428	22	450	43
Tri-Cities	415	418	392	-26	366	-52
Tri-Cities	416	148	157	9	166	18
Tri-Cities	417	358	373	15	389	31
Aurora Area	418	471	479	8	487	16
Tri-Cities	419	4	2	-1	1	-3
Aurora Area	420	225	173	-51	122	-103
Tri-Cities	421	262	226	-36	190	-72
Tri-Cities	422	34	36	2	37	3
Tri-Cities	423	347	342	-5	337	-10
Tri-Cities	424	32	34	3	37	5
Tri-Cities	425	45	43	-2	41	-3
Tri-Cities	426	553	566	13	579	26
Tri-Cities	427	508	551	43	595	87
Tri-Cities	428	186	188	3	191	5
Tri-Cities	429	396	405	9	414	19
Tri-Cities	430	255	262	7	270	14
Tri-Cities	431	454	458	4	461	7
Tri-Cities	432	343	347	4	351	8
Tri-Cities	433	98	103	5	108	10
Tri-Cities	434	151	155	4	159	8
Tri-Cities	435	233	232	-2	230	-4
Tri-Cities	436	29	30	1	31	2
Tri-Cities	437	18	19	1	20	2

Service Area	KCTAZ	HOUSEHOLDS				
		2003	2013	2013-2003 CHANGE	2023	2023-2003 CHANGE
Tri-Cities	438	340	360	20	381	40
Tri-Cities	439	371	383	11	394	23
Tri-Cities	440	299	374	75	449	150
Tri-Cities	441	251	259	9	268	17
Tri-Cities	442	378	443	66	509	131
Tri-Cities	443	52	52	0	51	0
Tri-Cities	444	191	175	-16	160	-32
Tri-Cities	445	104	106	2	108	4
Tri-Cities	446	235	279	44	323	88
Tri-Cities	447	242	240	-3	237	-5
Tri-Cities	448	373	378	4	382	9
Tri-Cities	449	257	255	-1	254	-3
Tri-Cities	450	715	854	140	994	279
Tri-Cities	451	181	172	-8	164	-17
Tri-Cities	452	85	97	13	110	25
Tri-Cities	453	153	144	-8	136	-16
Tri-Cities	454	38	43	5	49	11
Tri-Cities	455	2	1	-1	0	-2
Tri-Cities	456	37	76	39	115	78
Tri-Cities	457	0	2	1	3	3
Tri-Cities	458	0	1	1	2	2
Tri-Cities	459	526	521	-4	517	-9
Tri-Cities	460	195	200	6	206	11
Tri-Cities	461	419	435	16	452	33
Tri-Cities	462	577	573	-4	569	-8
Tri-Cities	463	348	380	32	412	64
Tri-Cities	464	204	217	13	231	27
Tri-Cities	465	77	81	3	84	7
Tri-Cities	466	34	37	3	40	6
Tri-Cities	467	9	40	31	71	62
Tri-Cities	468	0	0	0	0	0
Tri-Cities	469	0	0	0	0	0
Tri-Cities	470	4	6	3	9	5
Tri-Cities	471	0	0	0	0	0
Tri-Cities	472	0	0	0	0	0
Tri-Cities	473	58	87	29	117	59
Tri-Cities	474	116	122	6	127	12
Tri-Cities	475	144	219	75	294	150
Tri-Cities	476	0	0	0	0	0
Tri-Cities	477	0	1	0	1	1
Tri-Cities	478	17	75	57	132	115
Tri-Cities	479	357	311	-47	264	-93
Tri-Cities	480	78	80	3	83	5
Campton Hills	481	83	132	49	180	98
Campton Hills	482	229	243	14	256	27
Campton Hills	483	270	318	48	366	95
Tri-Cities	484	12	44	31	75	63
Tri-Cities	485	53	29	-24	5	-48
Tri-Cities	486	0	0	0	0	0

Service Area	KCTAZ	HOUSEHOLDS				
		2003	2013	2013-2003 CHANGE	2023	2023-2003 CHANGE
Tri-Cities	487	77	323	246	569	492
Tri-Cities	488	11	11	0	11	0
Tri-Cities	489	9	11	2	13	4
Tri-Cities	490	82	330	247	577	495
Tri-Cities	491	54	79	24	103	49
Tri-Cities	492	123	134	11	145	21
Campton Hills	493	117	152	35	187	71
Campton Hills	494	72	107	35	142	70
Campton Hills	495	223	698	475	1173	950
Campton Hills	496	76	298	222	520	443
Campton Hills	497	200	615	415	1030	830
Campton Hills	498	111	396	284	680	569
Tri-Cities	499	447	523	76	599	152
Tri-Cities	500	778	790	13	803	25
Tri-Cities	501	455	460	5	465	10
Tri-Cities	502	264	265	1	266	2
Tri-Cities	503	260	254	-6	248	-12
Tri-Cities	504	243	264	22	286	43
Tri-Cities	505	241	239	-3	236	-5
Tri-Cities	506	354	416	62	478	124
Tri-Cities	507	335	397	61	458	122
Tri-Cities	508	295	307	12	319	25
Tri-Cities	509	270	335	65	401	131
Campton Hills	510	88	121	33	154	66
Tri-Cities	511	479	481	3	484	5
Tri-Cities	512	458	479	21	500	42
Tri-Cities	513	435	447	12	459	24
Tri-Cities	514	254	257	3	260	6
Tri-Cities	515	263	267	4	271	8
Tri-Cities	516	28	30	1	31	3
Tri-Cities	517	335	343	8	351	16
Tri-Cities	518	133	134	2	136	3
Tri-Cities	519	24	23	-1	22	-2
Tri-Cities	520	68	68	0	68	0
Tri-Cities	521	74	73	-1	72	-2
Tri-Cities	522	2	3	1	4	2
Tri-Cities	523	300	348	48	396	96
Tri-Cities	524	151	149	-2	147	-4
Tri-Cities	525	83	78	-4	74	-9
Tri-Cities	526	152	152	0	152	0
Tri-Cities	527	71	70	-1	69	-2
Campton Hills	528	704	714	10	723	19
Tri-Cities	529	296	295	-1	294	-2
Tri-Cities	530	459	461	2	463	4
Tri-Cities	531	934	1098	163	1261	327
Tri-Cities	532	128	131	3	134	6
Tri-Cities	533	375	514	140	654	279
Tri-Cities	534	112	116	3	119	7
Tri-Cities	535	1	1	0	1	0

Service Area	KCTAZ	HOUSEHOLDS				
		2003	2013	2013-2003 CHANGE	2023	2023-2003 CHANGE
Tri-Cities	536	69	71	1	72	3
Tri-Cities	537	830	855	25	880	50
Tri-Cities	538	47	44	-3	41	-6
Tri-Cities	539	196	232	36	268	72
Tri-Cities	540	142	133	-8	125	-17
Tri-Cities	541	116	133	17	150	34
Tri-Cities	542	238	254	16	270	32
Tri-Cities	543	109	107	-1	106	-2
Tri-Cities	544	8	13	5	18	10
Tri-Cities	545	88	85	-3	81	-7
Greater Elgin	546	406	356	-50	306	-100
Tri-Cities	547	70	79	8	87	17
Tri-Cities	548	0	1	0	1	1
Tri-Cities	549	45	50	6	56	11
Tri-Cities	550	0	0	0	0	0
Tri-Cities	551	7	3	-3	0	-7
Tri-Cities	552	57	40	-17	23	-34
Tri-Cities	553	0	1	0	1	1
Tri-Cities	554	185	730	545	1275	1090
Tri-Cities	555	126	107	-19	88	-38
Tri-Cities	556	23	38	14	52	29
Tri-Cities	557	134	176	43	219	85
Tri-Cities	558	151	113	-37	76	-75
Tri-Cities	559	103	106	3	109	6
Tri-Cities	560	107	112	5	117	10
Greater Elgin	561	39	38	0	38	-1
Campton Hills	562	236	251	15	266	29
Greater Elgin	563	271	383	112	495	224
Greater Elgin	564	77	299	221	520	443
Greater Elgin	565	83	271	188	459	376
Greater Elgin	566	62	150	88	238	177
Greater Elgin	567	67	73	6	78	12
Campton Hills	568	224	508	284	793	568
Greater Elgin	569	16	47	31	77	61
Greater Elgin	570	20	75	55	130	110
Greater Elgin	571	11	43	33	76	65
Greater Elgin	572	54	236	182	418	363
Greater Elgin	573	17	73	57	130	113
Greater Elgin	574	61	96	34	130	69
Greater Elgin	575	9	38	29	67	58
Greater Elgin	576	14	31	17	48	33
Greater Elgin	577	45	87	43	130	85
Greater Elgin	578	138	129	-8	121	-16
Greater Elgin	579	145	140	-4	136	-8
Greater Elgin	580	157	224	67	291	134
Greater Elgin	581	287	469	182	651	365
Greater Elgin	582	16	66	50	116	100
Greater Elgin	583	28	122	94	216	188
Greater Elgin	584	294	426	133	559	265

Service Area	KCTAZ	HOUSEHOLDS				
		2003	2013	2013-2003 CHANGE	2023	2023-2003 CHANGE
Greater Elgin	585	26	97	72	169	144
Greater Elgin	586	478	322	-157	165	-313
Greater Elgin	587	249	291	42	333	83
Greater Elgin	588	370	812	442	1254	883
Greater Elgin	589	420	532	112	644	224
Greater Elgin	590	662	722	60	782	120
Greater Elgin	591	235	237	2	238	3
Greater Elgin	592	213	245	32	277	65
Greater Elgin	593	95	190	95	285	190
Greater Elgin	594	357	397	40	436	80
Greater Elgin	595	27	30	3	34	7
Greater Elgin	596	191	213	22	235	44
Greater Elgin	597	108	116	8	124	16
Greater Elgin	598	457	482	25	507	49
Greater Elgin	599	532	696	164	859	327
Greater Elgin	600	371	1101	730	1830	1459
Greater Elgin	601	467	577	110	687	220
Greater Elgin	602	414	425	11	436	22
Greater Elgin	603	353	456	103	560	207
Greater Elgin	604	298	292	-6	286	-12
Greater Elgin	605	570	555	-15	540	-30
Greater Elgin	606	412	304	-108	196	-216
Greater Elgin	607	456	454	-1	453	-3
Greater Elgin	608	380	265	-115	150	-230
Greater Elgin	609	516	766	250	1017	500
Greater Elgin	610	403	419	17	436	33
Greater Elgin	611	1	6	5	11	10
Greater Elgin	612	0	0	0	0	0
Greater Elgin	613	504	542	38	580	76
Greater Elgin	614	428	842	414	1257	828
Greater Elgin	615	661	713	52	765	103
Greater Elgin	616	436	457	22	479	44
Greater Elgin	617	385	408	23	430	45
Greater Elgin	618	590	627	37	663	73
Greater Elgin	619	394	416	22	439	45
Greater Elgin	620	287	312	25	337	51
Greater Elgin	621	514	568	54	622	108
Greater Elgin	622	476	505	28	533	56
Greater Elgin	623	340	362	22	385	45
Greater Elgin	624	442	667	224	891	449
Greater Elgin	625	603	638	34	672	69
Greater Elgin	626	367	295	-73	222	-145
Greater Elgin	627	168	172	4	176	8
Greater Elgin	628	408	419	12	431	23
Greater Elgin	629	191	212	21	233	42
Greater Elgin	630	98	102	4	106	8
Greater Elgin	631	60	238	177	415	355
Greater Elgin	632	62	61	0	61	-1
Greater Elgin	633	13	14	1	15	2

Service Area	KCTAZ	HOUSEHOLDS				
		2003	2013	2013-2003 CHANGE	2023	2023-2003 CHANGE
Greater Elgin	634	0	0	0	0	0
Greater Elgin	635	587	644	57	701	114
Greater Elgin	636	8	34	27	61	53
Greater Elgin	637	718	792	74	866	148
Greater Elgin	638	617	661	44	705	88
Greater Elgin	639	751	803	53	856	105
Greater Elgin	640	974	1080	107	1187	213
Greater Elgin	641	294	313	19	333	39
Greater Elgin	642	347	369	22	391	44
Greater Elgin	643	60	64	4	67	7
Greater Elgin	644	420	449	28	477	56
Greater Elgin	645	134	140	6	147	13
Greater Elgin	646	133	144	12	156	24
Greater Elgin	647	188	209	21	229	41
Greater Elgin	648	18	19	0	19	1
Greater Elgin	649	12	14	1	15	3
Greater Elgin	650	67	72	6	78	11
Greater Elgin	651	1	1	0	1	0
Greater Elgin	652	28	35	7	41	13
Greater Elgin	653	10	12	2	14	3
Greater Elgin	654	696	773	77	851	155
Greater Elgin	655	528	581	53	634	107
Greater Elgin	656	723	798	75	873	151
Greater Elgin	657	699	745	46	791	92
Greater Elgin	658	889	938	49	986	98
Greater Elgin	659	651	716	65	782	131
Greater Elgin	660	642	693	52	745	104
Greater Elgin	661	646	701	56	757	111
Greater Elgin	662	440	472	31	503	63
Greater Elgin	663	641	676	35	711	71
Greater Elgin	664	569	588	20	608	39
Greater Elgin	665	481	516	35	551	70
Greater Elgin	666	158	167	8	175	17
Greater Elgin	667	8	8	0	9	1
Greater Elgin	668	0	0	0	0	0
Greater Elgin	669	4	7	3	11	7
Greater Elgin	670	0	1	1	2	2
Upper Fox	671	0	0	0	0	0
Upper Fox	672	90	125	35	160	70
Upper Fox	673	109	451	342	793	684
Upper Fox	674	0	0	0	0	0
Upper Fox	675	144	486	342	828	684
Upper Fox	676	509	684	175	859	350
Upper Fox	677	275	680	404	1084	809
Upper Fox	678	17	15	-2	13	-4
Greater Elgin	679	1	2	0	2	1
Greater Elgin	680	0	1	0	1	1
Greater Elgin	681	267	300	33	333	66
Greater Elgin	682	11	19	7	26	15

Service Area	KCTAZ	HOUSEHOLDS				
		2003	2013	2013-2003 CHANGE	2023	2023-2003 CHANGE
Upper Fox	683	166	171	6	177	11
Upper Fox	684	156	177	20	197	41
Upper Fox	685	72	114	41	155	83
Upper Fox	686	171	205	33	238	67
Upper Fox	687	348	1374	1027	2401	2053
Upper Fox	688	611	1404	793	2196	1585
Upper Fox	689	702	606	-97	509	-193
Upper Fox	690	72	307	234	541	469
Upper Fox	691	312	304	-9	295	-17
Upper Fox	692	83	88	6	94	11
Upper Fox	693	283	258	-26	232	-51
Greater Elgin	694	7	10	3	12	6
Greater Elgin	695	10	19	9	27	18
Greater Elgin	696	0	0	0	0	0
Greater Elgin	697	53	58	4	62	9
Upper Fox	698	42	49	7	56	14
Upper Fox	699	56	55	-1	54	-2
Upper Fox	700	156	158	2	160	4
Upper Fox	701	250	256	6	262	12
Upper Fox	702	78	102	23	125	47
Upper Fox	703	391	531	140	671	280
Upper Fox	704	143	168	25	193	50
Upper Fox	705	166	158	-8	150	-16
Upper Fox	706	186	653	467	1120	934
Upper Fox	707	33	79	46	125	92
Upper Fox	708	153	152	-1	151	-2
Upper Fox	709	117	122	6	128	11
Upper Fox	710	108	199	92	291	183
Upper Fox	711	96	101	5	106	10
Upper Fox	712	32	40	8	48	16
Upper Fox	713	31	36	6	42	11
Upper Fox	714	160	80	-80	0	-160
Upper Fox	715	141	169	27	196	55
Upper Fox	716	45	53	9	62	17
Upper Fox	717	117	141	23	164	47
Greater Elgin	718	0	0	0	0	0
Greater Elgin	719	70	201	131	332	262
Greater Elgin	720	0	1	1	2	2
Greater Elgin	721	10	43	33	76	66
Upper Fox	722	154	273	118	391	236
Upper Fox	723	260	267	7	274	14
Upper Fox	724	22	23	1	24	2
Upper Fox	725	729	737	9	746	17
Upper Fox	726	68	112	44	156	88
Upper Fox	727	125	139	14	153	28
Upper Fox	728	442	459	17	476	34
Upper Fox	729	242	266	23	289	47
Upper Fox	730	187	186	0	186	-1
Upper Fox	731	102	111	9	120	18

Service Area	KCTAZ	HOUSEHOLDS				
		2003	2013	2013-2003 CHANGE	2023	2023-2003 CHANGE
Upper Fox	732	282	309	27	336	54
Upper Fox	733	19	21	2	23	4
Upper Fox	734	35	134	98	232	197
Upper Fox	735	17	65	49	114	97
Upper Fox	736	94	102	7	109	15
Upper Fox	737	59	68	9	77	18
Upper Fox	738	396	417	21	438	42
Greater Elgin	739	4	12	7	19	15
Greater Elgin	740	13	17	4	20	7
Greater Elgin	741	5	17	12	29	24
Greater Elgin	742	7	8	1	9	2
Upper Fox	743	11	13	1	14	3
Upper Fox	744	196	191	-4	187	-9
Upper Fox	745	9	17	7	24	15
Upper Fox	746	139	78	-62	16	-123
Upper Fox	747	293	297	3	300	7
Upper Fox	748	121	130	10	140	19
Upper Fox	749	288	378	90	468	180
Upper Fox	750	110	129	19	148	38
Upper Fox	751	205	309	103	412	207
Upper Fox	752	82	111	30	141	59
Upper Fox	753	543	578	34	612	69
Upper Fox	754	542	594	51	645	103
Upper Fox	755	198	214	16	230	32
Upper Fox	756	354	416	62	478	124
Upper Fox	757	533	551	18	569	36
Upper Fox	758	654	668	13	681	27
Upper Fox	759	3	2	-1	1	-2
Upper Fox	760	0	0	0	0	0
Upper Fox	761	0	0	0	0	0
Upper Fox	762	82	337	255	592	510
Greater Elgin	763	84	124	40	164	80
Upper Fox	764	1	5	3	8	7
Upper Fox	765	1	2	0	2	1
Upper Fox	766	0	0	0	0	0
Upper Fox	767	0	0	0	0	0
Upper Fox	768	79	88	8	96	17
Upper Fox	769	194	288	94	382	188
Upper Fox	770	0	1	0	1	1
Upper Fox	771	405	406	0	406	1
Upper Fox	772	399	500	101	601	202
Upper Fox	773	648	677	28	705	57
Upper Fox	774	402	437	36	473	71
Upper Fox	775	103	104	1	105	2
Upper Fox	776	620	645	25	670	50
Upper Fox	777	601	662	62	724	123
Upper Fox	778	47	32	-14	18	-29
Upper Fox	779	213	212	0	212	-1
Upper Fox	780	34	33	0	33	-1

**TABLE A-2:
Kane County Updated Land Use Assumptions by Transportation Analysis Zone (TAZ)
2003, 2013, and 2023 Population**

Service Area	KCTAZ	POPULATION				
		2003	2013	2013-2003 CHANGE	2023	2023-2003 CHANGE
Southwest	1	54	59	4	63	9
Southwest	2	140	168	29	197	57
Southwest	3	161	170	9	179	18
Southwest	4	90	96	6	102	12
Southwest	5	16	51	35	86	70
Southwest	6	13	37	23	60	47
Southwest	7	62	45	-17	28	-34
Southwest	8	146	146	0	146	0
Southwest	9	85	94	10	104	19
Southwest	10	99	111	13	124	25
Southwest	11	369	398	29	427	58
Southwest	12	16	21	4	25	9
Southwest	13	450	482	32	514	64
Southwest	14	249	262	13	275	26
Southwest	15	59	70	11	81	22
Southwest	16	54	62	7	69	15
Southwest	17	62	70	8	78	16
West Central	18	52	56	3	59	7
Southwest	19	58	72	13	85	27
Southwest	20	54	63	10	73	19
West Central	21	347	399	53	452	105
Southwest	22	9	11	3	14	5
Southwest	23	487	516	30	546	59
West Central	24	78	103	25	128	50
West Central	25	101	101	0	101	0
Southwest	26	21	20	-1	19	-2
Southwest	27	23	28	6	34	11
West Central	28	785	826	41	867	82
West Central	29	87	84	-3	81	-6
West Central	30	146	144	-3	141	-5
West Central	31	65	65	0	65	0
West Central	32	191	249	57	306	115
West Central	33	161	170	9	179	18
West Central	34	221	230	8	238	17
West Central	35	207	218	10	228	21
West Central	36	115	113	-1	112	-3
West Central	37	88	89	2	91	3
Northwest	38	83	78	-4	74	-9
Northwest	39	100	102	2	104	4
West Central	40	57	58	1	59	2
Northwest	41	254	262	7	269	15
Northwest	42	155	209	53	262	107
Northwest	43	114	135	22	157	43
Northwest	44	379	393	13	406	27
Northwest	45	49	50	1	51	2

Service Area	KCTAZ	POPULATION				
		2003	2013	2013-2003 CHANGE	2023	2023-2003 CHANGE
West Central	46	223	225	3	228	5
Northwest	47	226	187	-40	147	-79
Northwest	48	131	135	4	139	8
Northwest	49	188	207	20	227	39
Northwest	50	57	59	2	61	4
Northwest	51	133	139	6	145	12
Northwest	52	88	76	-12	64	-24
Northwest	53	59	82	23	105	46
Northwest	54	26	47	21	68	42
Northwest	55	72	82	10	92	20
Northwest	56	480	361	-120	241	-239
Northwest	57	415	627	212	839	424
Northwest	58	157	530	373	903	746
Northwest	59	414	412	-1	411	-3
Northwest	60	28	47	19	66	38
Northwest	61	5	5	0	5	0
Northwest	62	1353	1318	-35	1283	-70
Northwest	63	0	0	0	0	0
Northwest	64	3	2	-1	1	-2
Northwest	65	661	846	185	1031	370
Northwest	66	338	870	532	1402	1064
Northwest	67	454	856	401	1257	803
Northwest	68	298	376	77	453	155
Northwest	69	27	31	3	34	7
Northwest	70	3	1	-1	0	-3
Northwest	71	1	2	2	4	3
Northwest	72	4	3	0	3	-1
Northwest	73	3	2	-2	0	-3
Northwest	74	5	6	1	7	2
Northwest	75	31	40	9	49	18
Southwest	76	70	75	5	80	10
Southwest	77	331	507	177	684	353
Southwest	78	0	2	1	3	3
Southwest	79	16	38	22	60	44
Southwest	80	171	170	-1	169	-2
Southwest	81	165	580	415	995	830
Southwest	82	132	200	68	268	136
Southwest	83	5	6	0	6	1
Southwest	84	17	19	1	20	3
Southwest	85	38	60	21	81	43
Southwest	86	8	9	1	10	2
Southwest	87	73	105	32	137	64
Southwest	88	498	1435	937	2372	1874
Southwest	89	12	17	6	23	11
Southwest	90	1064	1158	93	1251	187
Southwest	91	358	377	19	396	38
Southwest	92	1000	1011	11	1022	22
Southwest	93	156	591	436	1027	871
Southwest	94	207	349	141	490	283

Service Area	KCTAZ	POPULATION				
		2003	2013	2013-2003 CHANGE	2023	2023-2003 CHANGE
Southwest	95	59	157	98	255	196
Southwest	96	464	1968	1504	3472	3008
Southwest	97	195	189	-6	183	-12
Southwest	98	729	747	17	764	35
Southwest	99	303	494	191	685	382
Southwest	100	558	661	103	764	206
Southwest	101	260	225	-36	189	-71
Southwest	102	766	1292	527	1819	1053
Southwest	103	1057	3626	2569	6195	5138
Southwest	104	134	526	393	919	785
Southwest	105	137	246	109	355	218
Southwest	106	660	1735	1074	2809	2149
Aurora Area	107	38	115	77	192	154
Aurora Area	108	179	218	38	256	77
Aurora Area	109	474	423	-52	371	-103
Aurora Area	110	704	859	155	1014	310
Aurora Area	111	53	64	12	76	23
Aurora Area	112	99	160	60	220	121
Aurora Area	113	802	1427	625	2052	1250
Aurora Area	114	504	322	-182	140	-364
Southwest	115	22	31	8	39	17
West Central	116	7	5	-3	2	-5
West Central	117	77	72	-6	66	-11
West Central	118	19	18	0	18	-1
West Central	119	23	25	2	27	4
West Central	120	5	16	12	28	23
West Central	121	0	0	0	0	0
West Central	122	587	700	113	813	226
West Central	123	380	568	188	756	376
Southwest	124	232	311	80	391	159
West Central	125	371	352	-19	333	-38
West Central	126	151	150	-1	149	-2
West Central	127	409	391	-19	372	-37
West Central	128	191	570	380	950	759
West Central	129	148	284	136	420	272
West Central	130	608	823	215	1038	430
West Central	131	3	4	1	5	2
West Central	132	0	0	0	0	0
West Central	133	109	265	156	421	312
West Central	134	211	213	1	214	3
West Central	135	657	1000	343	1343	686
Tri-Cities	136	407	1023	617	1640	1233
Tri-Cities	137	45	46	0	46	1
Tri-Cities	138	35	37	1	38	3
Tri-Cities	139	8	8	0	8	0
Tri-Cities	140	3	3	0	3	0
Tri-Cities	141	0	0	0	0	0
Tri-Cities	142	5	5	0	5	0
Tri-Cities	143	213	633	420	1053	840

Service Area	KCTAZ	POPULATION				
		2003	2013	2013-2003 CHANGE	2023	2023-2003 CHANGE
Tri-Cities	144	26	27	2	29	3
Tri-Cities	145	1044	3264	2220	5484	4440
Tri-Cities	146	347	173	-173	0	-347
Tri-Cities	147	344	177	-167	10	-334
Tri-Cities	148	308	157	-152	5	-303
Tri-Cities	149	328	170	-159	11	-317
Tri-Cities	150	13	12	-1	11	-2
West Central	151	83	254	170	424	341
West Central	152	26	30	3	33	7
West Central	153	48	80	33	113	65
West Central	154	399	511	111	622	223
West Central	155	273	515	243	758	485
West Central	156	950	958	8	966	16
West Central	157	77	145	67	212	135
West Central	158	55	80	24	104	49
West Central	159	31	125	94	219	188
West Central	160	42	43	2	45	3
West Central	161	408	449	42	491	83
West Central	162	597	598	0	598	1
West Central	163	34	80	47	127	93
Campton Hills	164	136	165	29	194	58
Campton Hills	165	889	873	-16	857	-32
Campton Hills	166	1325	1367	41	1408	83
Campton Hills	167	48	102	53	155	107
Campton Hills	168	126	174	49	223	97
West Central	169	362	444	81	525	163
Campton Hills	170	482	507	24	531	49
Campton Hills	171	305	376	71	447	142
Campton Hills	172	460	498	38	536	76
Campton Hills	173	991	1042	50	1092	101
Campton Hills	174	310	320	10	330	20
Tri-Cities	175	238	337	98	435	197
Campton Hills	176	555	773	218	991	436
Campton Hills	177	129	235	106	341	212
Campton Hills	178	76	164	87	251	175
Campton Hills	179	363	451	89	540	177
Campton Hills	180	162	240	78	318	156
Campton Hills	181	414	513	98	611	197
Campton Hills	182	580	608	29	637	57
Campton Hills	183	111	170	59	229	118
Tri-Cities	184	38	103	65	168	130
Campton Hills	185	830	1063	233	1296	466
Campton Hills	186	1206	1555	349	1904	698
Campton Hills	187	603	871	269	1140	537
Campton Hills	188	534	551	17	568	34
Campton Hills	189	699	716	17	733	34
West Central	190	332	357	25	382	50
West Central	191	0	2	1	3	3
Northwest	192	12	13	0	13	1

Service Area	KCTAZ	POPULATION				
		2003	2013	2013-2003 CHANGE	2023	2023-2003 CHANGE
West Central	193	6	7	0	7	1
Northwest	194	3	5	1	6	3
Northwest	195	61	66	6	72	11
Northwest	196	190	198	7	205	15
Campton Hills	197	53	55	3	58	5
Campton Hills	198	35	40	4	44	9
Campton Hills	199	665	647	-18	629	-36
Campton Hills	200	333	365	32	397	64
Northwest	201	286	295	8	303	17
Campton Hills	202	261	546	284	830	569
Campton Hills	203	521	1022	502	1524	1003
Campton Hills	204	715	1144	429	1573	858
Northwest	205	481	546	64	610	129
Campton Hills	206	222	564	341	905	683
Campton Hills	207	452	821	368	1189	737
Northwest	208	101	132	30	162	61
Northwest	209	124	363	239	602	478
Northwest	210	3441	10478	7037	17515	14074
Northwest	211	56	57	0	57	1
Northwest	212	47	59	13	72	25
Upper Fox	213	116	144	29	173	57
Upper Fox	214	410	499	90	589	179
Northwest	215	66	90	23	113	47
Northwest	216	23	32	10	42	19
Northwest	217	268	849	581	1430	1162
Northwest	218	211	914	703	1617	1406
Northwest	219	79	98	19	117	38
Upper Fox	220	1613	4059	2447	6506	4893
Upper Fox	221	300	379	80	459	159
Upper Fox	222	73	92	18	110	37
Upper Fox	223	100	155	54	209	109
Upper Fox	224	0	0	0	0	0
Upper Fox	225	41	60	18	78	37
Upper Fox	226	166	228	63	291	125
Upper Fox	227	4	5	0	5	1
Upper Fox	228	155	179	23	202	47
Aurora Area	229	845	910	66	976	131
Aurora Area	230	1	5	4	9	8
Aurora Area	231	132	206	73	279	147
Aurora Area	232	0	0	0	0	0
Aurora Area	233	346	521	175	696	350
Aurora Area	234	389	384	-6	378	-11
Aurora Area	235	561	739	178	917	356
Aurora Area	236	576	612	37	649	73
Aurora Area	237	688	729	41	770	82
Aurora Area	238	349	692	343	1035	686
Aurora Area	239	537	583	46	629	92
Aurora Area	240	482	373	-108	265	-217
Aurora Area	241	504	813	308	1121	617

Service Area	KCTAZ	POPULATION				
		2003	2013	2013-2003 CHANGE	2023	2023-2003 CHANGE
Aurora Area	242	750	1062	313	1375	625
Aurora Area	243	3187	3034	-153	2881	-306
Aurora Area	244	1235	1200	-35	1165	-70
Aurora Area	245	14	63	48	111	97
Aurora Area	246	0	0	0	0	0
Aurora Area	247	1119	1258	139	1397	278
Aurora Area	248	0	2	1	3	3
Aurora Area	249	35	113	78	191	156
Aurora Area	250	72	303	230	533	461
Aurora Area	251	86	351	265	616	530
Aurora Area	252	491	612	121	733	242
Aurora Area	253	33	61	29	90	57
Aurora Area	254	0	0	0	0	0
Aurora Area	255	494	529	35	564	70
Aurora Area	256	44	48	3	51	7
Aurora Area	257	296	691	396	1087	791
Aurora Area	258	60	65	6	71	11
Aurora Area	259	493	478	-16	462	-31
Aurora Area	260	1036	991	-45	946	-90
Aurora Area	261	965	1103	137	1240	275
Aurora Area	262	1355	1366	10	1376	21
Aurora Area	263	1734	1616	-119	1497	-237
Aurora Area	264	950	941	-8	933	-17
Aurora Area	265	1541	1631	90	1721	180
Aurora Area	266	973	1080	107	1187	214
Aurora Area	267	2217	2193	-24	2169	-48
Aurora Area	268	1809	1703	-106	1597	-212
Aurora Area	269	12	36	23	59	47
Aurora Area	270	5	4	-1	3	-2
Aurora Area	271	1107	1209	102	1311	204
Aurora Area	272	318	304	-14	290	-28
Aurora Area	273	0	0	0	0	0
Aurora Area	274	918	980	63	1043	125
Aurora Area	275	0	0	0	0	0
Aurora Area	276	1495	1711	216	1927	432
Aurora Area	277	299	441	143	584	285
Aurora Area	278	432	440	7	447	15
Aurora Area	279	451	457	7	464	13
Aurora Area	280	920	922	2	924	4
Aurora Area	281	933	885	-47	838	-95
Aurora Area	282	675	634	-40	594	-81
Aurora Area	283	795	741	-54	687	-108
Aurora Area	284	1429	1348	-80	1268	-161
Aurora Area	285	910	912	3	915	5
Aurora Area	286	1592	1544	-47	1497	-95
Aurora Area	287	1074	1105	32	1137	63
Aurora Area	288	2467	2305	-163	2142	-325
Aurora Area	289	863	864	0	864	1
Aurora Area	290	1101	1050	-52	998	-103

Service Area	KCTAZ	POPULATION				
		2003	2013	2013-2003 CHANGE	2023	2023-2003 CHANGE
Aurora Area	291	2299	2241	-57	2184	-115
Aurora Area	292	1625	1507	-119	1388	-237
Aurora Area	293	2109	2088	-20	2068	-41
Aurora Area	294	494	576	81	657	163
Aurora Area	295	175	217	43	260	85
Aurora Area	296	58	88	30	118	60
Aurora Area	297	48	126	79	205	157
Aurora Area	298	1281	1273	-7	1266	-15
Aurora Area	299	78	82	4	86	8
Aurora Area	300	579	534	-45	489	-90
Aurora Area	301	718	857	138	995	277
Aurora Area	302	1474	1392	-83	1309	-165
Aurora Area	303	295	299	4	303	8
Aurora Area	304	1332	1260	-72	1188	-144
Aurora Area	305	2553	2388	-164	2224	-329
Aurora Area	306	3012	2899	-113	2786	-226
Aurora Area	307	2706	2409	-297	2112	-594
Aurora Area	308	3509	3190	-319	2871	-638
Aurora Area	309	548	477	-70	407	-141
Aurora Area	310	1625	1675	50	1725	100
Aurora Area	311	3179	3141	-39	3102	-77
Aurora Area	312	809	845	36	881	72
Aurora Area	313	1993	1799	-193	1606	-387
Aurora Area	314	516	604	88	692	176
Aurora Area	315	1210	1133	-77	1056	-154
Aurora Area	316	758	756	-1	755	-3
Aurora Area	317	166	249	83	332	166
Aurora Area	318	59	70	10	80	21
Aurora Area	319	91	92	1	93	2
Aurora Area	320	426	434	8	442	16
Aurora Area	321	752	1014	263	1277	525
Aurora Area	322	742	797	55	852	110
Aurora Area	323	521	484	-37	447	-74
Aurora Area	324	7	28	22	50	43
Aurora Area	325	216	250	33	283	67
Aurora Area	326	389	396	7	403	14
Aurora Area	327	2932	2720	-212	2508	-424
Aurora Area	328	1473	1359	-114	1245	-228
Aurora Area	329	1545	1549	4	1553	8
Aurora Area	330	3204	3096	-107	2989	-215
Aurora Area	331	2443	2298	-146	2152	-291
Aurora Area	332	2552	2457	-94	2363	-189
Aurora Area	333	2450	2214	-237	1977	-473
Aurora Area	334	1595	1424	-170	1254	-341
Aurora Area	335	1374	1328	-47	1281	-93
Aurora Area	336	809	820	12	832	23
Aurora Area	337	992	957	-35	922	-70
Aurora Area	338	473	474	0	474	1
Aurora Area	339	564	596	32	628	64

Service Area	KCTAZ	POPULATION				
		2003	2013	2013-2003 CHANGE	2023	2023-2003 CHANGE
Aurora Area	340	933	995	63	1058	125
Aurora Area	341	1614	1512	-102	1410	-204
Aurora Area	342	112	97	-16	81	-31
Aurora Area	343	0	0	0	0	0
Aurora Area	344	574	1250	677	1927	1353
Aurora Area	345	729	770	41	811	82
Aurora Area	346	1024	1375	351	1726	702
Aurora Area	347	445	1546	1101	2647	2202
Aurora Area	348	206	223	17	240	34
Aurora Area	349	502	977	475	1452	950
Aurora Area	350	4	6	2	8	4
Aurora Area	351	729	718	-12	706	-23
Aurora Area	352	1338	1351	13	1364	26
Aurora Area	353	49	54	5	59	10
Aurora Area	354	77	78	1	79	2
Aurora Area	355	67	69	1	70	3
Aurora Area	356	503	638	134	772	269
Aurora Area	357	26	34	7	41	15
Aurora Area	358	192	454	261	715	523
Aurora Area	359	621	775	154	929	308
Aurora Area	360	1106	1238	131	1369	263
Aurora Area	361	140	559	419	978	838
Aurora Area	362	708	646	-63	583	-125
Aurora Area	363	91	142	51	193	102
Aurora Area	364	107	99	-7	92	-15
Aurora Area	365	0	0	0	0	0
Aurora Area	366	99	78	-20	58	-41
Tri-Cities	367	286	464	178	642	356
Tri-Cities	368	304	356	51	407	103
Tri-Cities	369	228	286	57	343	115
Tri-Cities	370	131	209	77	286	155
Tri-Cities	371	156	135	-22	113	-43
Tri-Cities	372	274	273	0	273	-1
Tri-Cities	373	1072	1460	387	1847	775
Tri-Cities	374	221	326	105	431	210
Tri-Cities	375	98	204	107	311	213
Tri-Cities	376	73	137	63	200	127
Tri-Cities	377	8	7	-1	6	-2
Tri-Cities	378	96	359	263	622	526
Tri-Cities	379	147	139	-7	132	-15
Tri-Cities	380	27	74	47	121	94
Tri-Cities	381	594	479	-116	363	-231
Tri-Cities	382	295	647	353	1000	705
Tri-Cities	383	22	26	4	30	8
Tri-Cities	384	147	203	56	259	112
Tri-Cities	385	30	28	-1	27	-3
Tri-Cities	386	63	221	157	378	315
Tri-Cities	387	55	110	54	164	109
Tri-Cities	388	1015	941	-74	867	-148

Service Area	KCTAZ	POPULATION				
		2003	2013	2013-2003 CHANGE	2023	2023-2003 CHANGE
Tri-Cities	389	1251	1273	21	1294	43
Tri-Cities	390	99	55	-43	12	-87
Tri-Cities	391	62	36	-27	9	-53
Tri-Cities	392	61	183	122	305	244
Tri-Cities	393	323	1399	1077	2476	2153
Aurora Area	394	790	961	171	1132	342
Tri-Cities	395	28	77	48	125	97
Aurora Area	396	464	457	-7	450	-14
Tri-Cities	397	23	71	48	119	96
Tri-Cities	398	4	18	13	31	27
Tri-Cities	399	246	211	-34	177	-69
Tri-Cities	400	352	274	-77	197	-155
Tri-Cities	401	1165	1056	-109	947	-218
Tri-Cities	402	30	36	6	42	12
Tri-Cities	403	572	556	-17	539	-33
Tri-Cities	404	455	446	-10	436	-19
Tri-Cities	405	1307	1439	131	1570	263
Tri-Cities	406	736	794	58	852	116
Tri-Cities	407	104	197	93	290	186
Tri-Cities	408	1439	1402	-37	1365	-74
Tri-Cities	409	786	741	-46	695	-91
Tri-Cities	410	1104	1493	390	1883	779
Tri-Cities	411	165	145	-20	125	-40
Tri-Cities	412	1389	1666	277	1943	554
Tri-Cities	413	91	60	-31	29	-62
Tri-Cities	414	1241	1319	78	1397	156
Tri-Cities	415	1319	1238	-82	1156	-163
Tri-Cities	416	436	472	36	508	72
Tri-Cities	417	879	977	97	1074	195
Aurora Area	418	1498	1533	36	1569	71
Tri-Cities	419	11	7	-4	3	-8
Aurora Area	420	704	532	-173	359	-345
Tri-Cities	421	878	679	-199	480	-398
Tri-Cities	422	96	100	3	103	7
Tri-Cities	423	948	932	-16	916	-32
Tri-Cities	424	110	101	-8	93	-17
Tri-Cities	425	142	127	-16	111	-31
Tri-Cities	426	1206	1214	7	1221	15
Tri-Cities	427	1305	1378	73	1451	146
Tri-Cities	428	488	483	-5	478	-10
Tri-Cities	429	845	866	21	887	42
Tri-Cities	430	664	693	29	722	58
Tri-Cities	431	810	931	120	1051	241
Tri-Cities	432	923	912	-12	900	-23
Tri-Cities	433	285	297	11	308	23
Tri-Cities	434	384	390	7	397	13
Tri-Cities	435	670	635	-34	601	-69
Tri-Cities	436	76	75	0	75	-1
Tri-Cities	437	42	43	2	45	3

Service Area	KCTAZ	POPULATION				
		2003	2013	2013-2003 CHANGE	2023	2023-2003 CHANGE
Tri-Cities	438	768	833	64	897	129
Tri-Cities	439	949	951	2	953	4
Tri-Cities	440	606	786	180	966	360
Tri-Cities	441	603	604	2	606	3
Tri-Cities	442	1224	1323	99	1422	198
Tri-Cities	443	172	151	-20	131	-41
Tri-Cities	444	631	529	-103	426	-205
Tri-Cities	445	357	325	-31	294	-63
Tri-Cities	446	773	891	118	1009	236
Tri-Cities	447	767	714	-53	661	-106
Tri-Cities	448	955	963	8	971	16
Tri-Cities	449	826	777	-48	729	-97
Tri-Cities	450	1970	2292	322	2614	644
Tri-Cities	451	543	473	-70	403	-140
Tri-Cities	452	314	419	105	524	210
Tri-Cities	453	441	406	-35	371	-70
Tri-Cities	454	117	161	43	204	87
Tri-Cities	455	262	131	-131	0	-262
Tri-Cities	456	92	198	106	304	212
Tri-Cities	457	1	5	4	9	8
Tri-Cities	458	1	3	2	5	4
Tri-Cities	459	1343	1312	-32	1280	-63
Tri-Cities	460	533	532	-1	531	-2
Tri-Cities	461	1149	1160	11	1171	22
Tri-Cities	462	1905	1746	-160	1586	-319
Tri-Cities	463	1082	1078	-3	1075	-7
Tri-Cities	464	725	720	-5	715	-10
Tri-Cities	465	238	247	10	257	19
Tri-Cities	466	102	113	10	123	21
Tri-Cities	467	23	101	78	179	156
Tri-Cities	468	0	0	0	0	0
Tri-Cities	469	0	0	0	0	0
Tri-Cities	470	10	16	7	23	13
Tri-Cities	471	0	0	0	0	0
Tri-Cities	472	0	0	0	0	0
Tri-Cities	473	237	495	259	754	517
Tri-Cities	474	308	323	16	339	31
Tri-Cities	475	412	566	154	720	308
Tri-Cities	476	0	0	0	0	0
Tri-Cities	477	0	2	1	3	3
Tri-Cities	478	52	224	172	396	344
Tri-Cities	479	1062	893	-169	724	-338
Tri-Cities	480	238	227	-12	215	-23
Campton Hills	481	264	409	144	553	289
Campton Hills	482	753	788	36	824	71
Campton Hills	483	885	1009	124	1133	248
Tri-Cities	484	45	161	117	278	233
Tri-Cities	485	93	52	-41	11	-82
Tri-Cities	486	0	0	0	0	0

Service Area	KCTAZ	POPULATION				
		2003	2013	2013-2003 CHANGE	2023	2023-2003 CHANGE
Tri-Cities	487	200	796	597	1393	1193
Tri-Cities	488	26	28	1	29	3
Tri-Cities	489	23	28	4	32	9
Tri-Cities	490	206	815	609	1424	1218
Tri-Cities	491	155	212	57	269	114
Tri-Cities	492	348	363	15	378	30
Campton Hills	493	345	460	114	574	229
Campton Hills	494	231	343	112	455	224
Campton Hills	495	717	2145	1429	3574	2857
Campton Hills	496	230	864	634	1498	1268
Campton Hills	497	652	1906	1254	3160	2508
Campton Hills	498	320	1132	811	1943	1623
Tri-Cities	499	1358	1313	-45	1268	-90
Tri-Cities	500	1898	1888	-10	1878	-20
Tri-Cities	501	1271	1294	23	1317	46
Tri-Cities	502	710	691	-19	672	-38
Tri-Cities	503	585	552	-33	519	-66
Tri-Cities	504	682	748	66	814	132
Tri-Cities	505	592	558	-34	524	-68
Tri-Cities	506	1020	1173	153	1326	306
Tri-Cities	507	913	1037	123	1160	247
Tri-Cities	508	1023	1014	-10	1004	-19
Tri-Cities	509	915	1070	154	1224	309
Campton Hills	510	293	381	88	469	176
Tri-Cities	511	1184	1192	9	1201	17
Tri-Cities	512	1041	1100	60	1160	119
Tri-Cities	513	927	969	43	1012	85
Tri-Cities	514	602	635	33	668	66
Tri-Cities	515	490	539	50	589	99
Tri-Cities	516	61	72	10	82	21
Tri-Cities	517	763	786	23	809	46
Tri-Cities	518	518	499	-18	481	-37
Tri-Cities	519	70	62	-9	53	-17
Tri-Cities	520	196	205	8	213	17
Tri-Cities	521	215	224	8	232	17
Tri-Cities	522	4	9	5	14	10
Tri-Cities	523	812	965	153	1118	306
Tri-Cities	524	710	547	-163	384	-326
Tri-Cities	525	219	207	-11	196	-23
Tri-Cities	526	418	430	13	443	25
Tri-Cities	527	203	203	0	203	0
Campton Hills	528	2320	2178	-141	2037	-283
Tri-Cities	529	827	861	34	895	68
Tri-Cities	530	1429	1447	19	1466	37
Tri-Cities	531	2571	3220	648	3868	1297
Tri-Cities	532	420	426	6	432	12
Tri-Cities	533	802	1194	392	1586	784
Tri-Cities	534	364	345	-19	326	-38
Tri-Cities	535	3	3	0	3	0

Service Area	KCTAZ	POPULATION				
		2003	2013	2013-2003 CHANGE	2023	2023-2003 CHANGE
Tri-Cities	536	214	279	65	344	130
Tri-Cities	537	2348	2400	51	2451	103
Tri-Cities	538	97	102	5	107	10
Tri-Cities	539	593	654	61	715	122
Tri-Cities	540	424	393	-32	361	-63
Tri-Cities	541	357	391	33	424	67
Tri-Cities	542	715	907	192	1099	384
Tri-Cities	543	322	301	-22	279	-43
Tri-Cities	544	21	35	14	49	28
Tri-Cities	545	228	229	0	229	1
Greater Elgin	546	1076	985	-91	894	-182
Tri-Cities	547	244	245	2	247	3
Tri-Cities	548	0	2	1	3	3
Tri-Cities	549	142	148	7	155	13
Tri-Cities	550	0	0	0	0	0
Tri-Cities	551	11	6	-6	0	-11
Tri-Cities	552	152	115	-37	78	-74
Tri-Cities	553	0	1	1	2	2
Tri-Cities	554	482	1887	1405	3292	2810
Tri-Cities	555	348	288	-60	228	-120
Tri-Cities	556	72	97	26	123	51
Tri-Cities	557	425	496	72	568	143
Tri-Cities	558	514	365	-150	215	-299
Tri-Cities	559	311	310	-2	308	-3
Tri-Cities	560	310	328	18	346	36
Greater Elgin	561	107	103	-3	100	-7
Campton Hills	562	675	737	61	798	123
Greater Elgin	563	771	1116	344	1460	689
Greater Elgin	564	236	880	644	1524	1288
Greater Elgin	565	233	779	547	1326	1093
Greater Elgin	566	205	420	215	635	430
Greater Elgin	567	193	216	23	239	46
Campton Hills	568	650	1478	827	2305	1655
Greater Elgin	569	42	134	91	225	183
Greater Elgin	570	59	220	161	381	322
Greater Elgin	571	30	121	91	212	182
Greater Elgin	572	152	659	507	1166	1014
Greater Elgin	573	50	215	166	381	331
Greater Elgin	574	187	284	97	381	194
Greater Elgin	575	25	108	83	191	166
Greater Elgin	576	40	88	47	135	95
Greater Elgin	577	131	256	125	381	250
Greater Elgin	578	470	399	-71	328	-142
Greater Elgin	579	496	451	-45	406	-90
Greater Elgin	580	443	612	170	782	339
Greater Elgin	581	819	1287	468	1755	936
Greater Elgin	582	42	172	130	302	260
Greater Elgin	583	99	367	269	636	537
Greater Elgin	584	933	1251	318	1569	636

Service Area	KCTAZ	POPULATION				
		2003	2013	2013-2003 CHANGE	2023	2023-2003 CHANGE
Greater Elgin	585	71	276	204	480	409
Greater Elgin	586	1406	930	-476	454	-952
Greater Elgin	587	586	759	173	932	346
Greater Elgin	588	973	2240	1267	3507	2534
Greater Elgin	589	1254	1536	282	1818	564
Greater Elgin	590	2040	2115	75	2190	150
Greater Elgin	591	724	696	-29	667	-57
Greater Elgin	592	564	675	110	785	221
Greater Elgin	593	229	514	284	798	569
Greater Elgin	594	1119	1164	45	1209	90
Greater Elgin	595	58	64	6	70	12
Greater Elgin	596	500	588	87	675	175
Greater Elgin	597	391	395	3	398	7
Greater Elgin	598	968	1108	140	1248	280
Greater Elgin	599	1263	1785	522	2307	1044
Greater Elgin	600	1039	3028	1990	5018	3979
Greater Elgin	601	1481	1713	233	1946	465
Greater Elgin	602	1175	1190	14	1204	29
Greater Elgin	603	984	1300	317	1617	633
Greater Elgin	604	953	845	-109	736	-217
Greater Elgin	605	1323	1386	63	1449	126
Greater Elgin	606	1325	949	-376	573	-752
Greater Elgin	607	1588	1653	65	1718	130
Greater Elgin	608	1025	700	-326	374	-651
Greater Elgin	609	1451	2172	721	2893	1442
Greater Elgin	610	1152	1189	37	1226	74
Greater Elgin	611	4	17	13	30	26
Greater Elgin	612	0	0	0	0	0
Greater Elgin	613	1563	1517	-47	1470	-93
Greater Elgin	614	959	2000	1040	3040	2081
Greater Elgin	615	1914	1923	8	1931	17
Greater Elgin	616	1321	1281	-40	1241	-80
Greater Elgin	617	1118	1157	39	1196	78
Greater Elgin	618	1672	1673	2	1675	3
Greater Elgin	619	1086	1078	-8	1070	-16
Greater Elgin	620	701	755	54	809	108
Greater Elgin	621	1431	1412	-19	1393	-38
Greater Elgin	622	1140	1135	-6	1129	-11
Greater Elgin	623	799	857	58	915	116
Greater Elgin	624	1160	1685	526	2211	1051
Greater Elgin	625	1775	1816	40	1856	81
Greater Elgin	626	843	668	-176	492	-351
Greater Elgin	627	458	469	11	480	22
Greater Elgin	628	1128	1130	3	1133	5
Greater Elgin	629	525	581	57	638	113
Greater Elgin	630	232	244	11	255	23
Greater Elgin	631	154	600	446	1046	892
Greater Elgin	632	156	148	-8	140	-16
Greater Elgin	633	391	213	-179	34	-357

Service Area	KCTAZ	POPULATION				
		2003	2013	2013-2003 CHANGE	2023	2023-2003 CHANGE
Greater Elgin	634	0	0	0	0	0
Greater Elgin	635	1670	1729	58	1787	117
Greater Elgin	636	101	127	26	153	52
Greater Elgin	637	2079	2092	13	2105	26
Greater Elgin	638	1703	1671	-32	1639	-64
Greater Elgin	639	2289	2290	0	2290	1
Greater Elgin	640	2352	2411	60	2471	119
Greater Elgin	641	1002	1047	44	1091	89
Greater Elgin	642	915	1006	90	1096	181
Greater Elgin	643	290	286	-4	282	-8
Greater Elgin	644	1458	1475	17	1492	34
Greater Elgin	645	397	392	-5	387	-10
Greater Elgin	646	346	495	150	645	299
Greater Elgin	647	831	815	-17	798	-33
Greater Elgin	648	47	41	-7	34	-13
Greater Elgin	649	35	34	-1	33	-2
Greater Elgin	650	165	184	20	204	39
Greater Elgin	651	2	3	0	3	1
Greater Elgin	652	113	131	17	148	35
Greater Elgin	653	35	37	2	39	4
Greater Elgin	654	2156	2155	-2	2153	-3
Greater Elgin	655	2020	1994	-26	1968	-52
Greater Elgin	656	2780	2805	24	2829	49
Greater Elgin	657	2182	2218	37	2255	73
Greater Elgin	658	3158	3047	-111	2936	-222
Greater Elgin	659	2333	2349	17	2366	33
Greater Elgin	660	2029	2044	15	2059	30
Greater Elgin	661	2344	2383	39	2422	78
Greater Elgin	662	1293	1308	16	1324	31
Greater Elgin	663	2109	1969	-140	1829	-280
Greater Elgin	664	1665	1569	-97	1472	-193
Greater Elgin	665	728	787	60	847	119
Greater Elgin	666	412	417	4	421	9
Greater Elgin	667	18	19	2	21	3
Greater Elgin	668	0	0	0	0	0
Greater Elgin	669	14	23	8	31	17
Greater Elgin	670	1	5	4	9	8
Upper Fox	671	0	0	0	0	0
Upper Fox	672	296	393	97	490	194
Upper Fox	673	311	1289	978	2267	1956
Upper Fox	674	0	0	0	0	0
Upper Fox	675	423	1395	972	2367	1944
Upper Fox	676	1341	1996	655	2651	1310
Upper Fox	677	749	2097	1347	3444	2695
Upper Fox	678	49	46	-3	43	-6
Greater Elgin	679	2	3	2	5	3
Greater Elgin	680	0	2	1	3	3
Greater Elgin	681	735	916	180	1096	361
Greater Elgin	682	31	55	23	78	47

Service Area	KCTAZ	POPULATION				
		2003	2013	2013-2003 CHANGE	2023	2023-2003 CHANGE
Upper Fox	683	560	579	20	599	39
Upper Fox	684	478	530	53	583	105
Upper Fox	685	241	333	92	425	184
Upper Fox	686	508	618	110	728	220
Upper Fox	687	686	2601	1915	4516	3830
Upper Fox	688	1599	3515	1916	5431	3832
Upper Fox	689	1975	1842	-133	1709	-266
Upper Fox	690	220	944	724	1668	1448
Upper Fox	691	828	870	41	911	83
Upper Fox	692	316	304	-12	292	-24
Upper Fox	693	1037	877	-160	717	-320
Greater Elgin	694	18	29	10	39	21
Greater Elgin	695	25	52	27	79	54
Greater Elgin	696	0	0	0	0	0
Greater Elgin	697	152	171	20	191	39
Upper Fox	698	148	160	12	172	24
Upper Fox	699	182	175	-7	168	-14
Upper Fox	700	556	525	-31	494	-62
Upper Fox	701	674	672	-2	670	-4
Upper Fox	702	224	282	59	341	117
Upper Fox	703	1319	1627	308	1935	616
Upper Fox	704	458	506	49	555	97
Upper Fox	705	506	468	-39	429	-77
Upper Fox	706	389	1209	820	2029	1640
Upper Fox	707	101	243	142	385	284
Upper Fox	708	349	407	57	464	115
Upper Fox	709	421	463	42	505	84
Upper Fox	710	350	628	278	906	556
Upper Fox	711	347	327	-20	307	-40
Upper Fox	712	92	105	13	118	26
Upper Fox	713	95	100	6	106	11
Upper Fox	714	605	303	-303	0	-605
Upper Fox	715	514	603	90	693	179
Upper Fox	716	134	162	29	191	57
Upper Fox	717	376	451	75	526	150
Greater Elgin	718	0	0	0	0	0
Greater Elgin	719	211	591	380	971	760
Greater Elgin	720	41	26	-14	12	-29
Greater Elgin	721	29	124	96	220	191
Upper Fox	722	482	806	324	1130	648
Upper Fox	723	550	579	29	608	58
Upper Fox	724	50	53	3	56	6
Upper Fox	725	1718	1733	14	1747	29
Upper Fox	726	192	333	142	475	283
Upper Fox	727	269	288	18	306	37
Upper Fox	728	1053	1095	41	1136	83
Upper Fox	729	635	670	36	706	71
Upper Fox	730	485	493	8	501	16
Upper Fox	731	400	411	12	423	23

Service Area	KCTAZ	POPULATION				
		2003	2013	2013-2003 CHANGE	2023	2023-2003 CHANGE
Upper Fox	732	861	908	47	955	94
Upper Fox	733	38	50	11	61	23
Upper Fox	734	105	391	286	677	572
Upper Fox	735	48	190	141	331	283
Upper Fox	736	240	264	23	287	47
Upper Fox	737	189	205	17	222	33
Upper Fox	738	1165	1206	41	1247	82
Greater Elgin	739	9	27	18	45	36
Greater Elgin	740	38	47	10	57	19
Greater Elgin	741	12	40	27	67	55
Greater Elgin	742	32	28	-3	25	-7
Upper Fox	743	22	27	5	32	10
Upper Fox	744	514	489	-26	463	-51
Upper Fox	745	27	47	20	67	40
Upper Fox	746	268	152	-117	35	-233
Upper Fox	747	671	702	32	734	63
Upper Fox	748	301	330	30	360	59
Upper Fox	749	743	965	222	1187	444
Upper Fox	750	290	330	40	370	80
Upper Fox	751	571	894	323	1217	646
Upper Fox	752	247	336	88	424	177
Upper Fox	753	1642	1621	-21	1600	-42
Upper Fox	754	1648	1697	48	1745	97
Upper Fox	755	615	653	37	690	75
Upper Fox	756	1282	1440	157	1597	315
Upper Fox	757	1980	1896	-84	1812	-168
Upper Fox	758	2545	2377	-168	2209	-336
Upper Fox	759	19	11	-8	3	-16
Upper Fox	760	0	0	0	0	0
Upper Fox	761	0	0	0	0	0
Upper Fox	762	239	988	748	1736	1497
Greater Elgin	763	244	343	100	443	199
Upper Fox	764	2	10	8	18	16
Upper Fox	765	3	5	1	6	3
Upper Fox	766	0	0	0	0	0
Upper Fox	767	0	0	0	0	0
Upper Fox	768	203	226	23	249	46
Upper Fox	769	676	888	212	1100	424
Upper Fox	770	0	2	1	3	3
Upper Fox	771	1780	1545	-234	1311	-469
Upper Fox	772	1463	1659	196	1855	392
Upper Fox	773	2364	2303	-62	2241	-123
Upper Fox	774	1789	1711	-79	1632	-157
Upper Fox	775	380	354	-27	327	-53
Upper Fox	776	2124	2092	-31	2061	-63
Upper Fox	777	2277	2349	71	2420	143
Upper Fox	778	158	104	-53	51	-107
Upper Fox	779	782	745	-37	708	-74
Upper Fox	780	104	99	-6	93	-11

**TABLE A-3:
Kane County Updated Land Use Assumptions by Transportation Analysis Zone (TAZ)
2003, 2013, and 2023 Employment**

Service Area	KCTAZ	EMPLOYMENT				
		2003	2013	2013-2003 CHANGE	2023	2023-2003 CHANGE
Southwest	1	0	0	0	0	0
Southwest	2	14	62	47	109	95
Southwest	3	1	4	3	7	6
Southwest	4	0	0	0	0	0
Southwest	5	4	16	13	29	25
Southwest	6	5	21	16	37	32
Southwest	7	4	18	14	32	28
Southwest	8	3	12	10	22	19
Southwest	9	5	24	18	42	37
Southwest	10	0	0	0	0	0
Southwest	11	16	68	53	121	105
Southwest	12	18	78	60	138	120
Southwest	13	10	44	33	77	67
Southwest	14	244	212	-32	180	-64
Southwest	15	6	25	20	45	39
Southwest	16	143	89	-54	35	-108
Southwest	17	0	0	0	0	0
West Central	18	0	0	0	0	0
Southwest	19	0	0	0	0	0
Southwest	20	0	0	0	0	0
West Central	21	32	141	108	249	217
Southwest	22	0	0	0	0	0
Southwest	23	0	0	0	0	0
West Central	24	26	13	-13	0	-26
West Central	25	19	84	64	148	129
Southwest	26	0	0	0	0	0
Southwest	27	0	0	0	0	0
West Central	28	78	238	160	398	320
West Central	29	0	0	0	0	0
West Central	30	38	166	128	294	256
West Central	31	0	0	0	0	0
West Central	32	2	10	7	17	15
West Central	33	14	60	47	107	93
West Central	34	38	63	26	89	51
West Central	35	13	56	43	99	86
West Central	36	3	12	9	21	18
West Central	37	0	0	0	0	0
Northwest	38	0	0	0	0	0
Northwest	39	0	0	0	0	0
West Central	40	0	0	0	0	0
Northwest	41	20	10	-10	0	-20
Northwest	42	37	74	37	111	74
Northwest	43	264	141	-123	18	-246
Northwest	44	56	128	73	201	145
Northwest	45	0	0	0	0	0

Service Area	KCTAZ	EMPLOYMENT				
		2003	2013	2013-2003 CHANGE	2023	2023-2003 CHANGE
West Central	46	19	80	62	142	123
Northwest	47	8	35	27	62	54
Northwest	48	0	0	0	0	0
Northwest	49	76	38	-38	0	-76
Northwest	50	20	10	-10	0	-20
Northwest	51	24	22	-1	21	-3
Northwest	52	0	0	0	0	0
Northwest	53	8	36	28	64	56
Northwest	54	10	44	33	77	67
Northwest	55	0	0	0	0	0
Northwest	56	77	71	-7	64	-13
Northwest	57	250	237	-13	224	-26
Northwest	58	8	37	28	65	57
Northwest	59	32	138	107	245	213
Northwest	60	9	38	30	68	59
Northwest	61	0	0	0	0	0
Northwest	62	192	170	-22	148	-44
Northwest	63	0	0	0	0	0
Northwest	64	0	0	0	0	0
Northwest	65	603	560	-43	517	-86
Northwest	66	0	0	0	0	0
Northwest	67	30	132	101	233	203
Northwest	68	93	315	222	537	444
Northwest	69	0	0	0	0	0
Northwest	70	29	127	98	225	196
Northwest	71	29	127	98	225	196
Northwest	72	29	127	98	225	196
Northwest	73	29	127	98	225	196
Northwest	74	88	382	293	675	587
Northwest	75	28	121	93	214	186
Southwest	76	0	0	0	0	0
Southwest	77	82	254	172	426	344
Southwest	78	50	25	-25	0	-50
Southwest	79	10	45	35	80	70
Southwest	80	0	0	0	0	0
Southwest	81	114	166	52	218	104
Southwest	82	31	135	103	238	207
Southwest	83	19	83	63	146	127
Southwest	84	68	297	228	525	457
Southwest	85	95	310	215	525	430
Southwest	86	651	588	-63	525	-126
Southwest	87	68	297	228	525	457
Southwest	88	19	81	62	143	124
Southwest	89	26	111	86	197	171
Southwest	90	75	38	-37	1	-74
Southwest	91	13	58	45	103	90
Southwest	92	14	59	46	105	91
Southwest	93	358	1229	871	2100	1742
Southwest	94	19	83	64	147	128

Service Area	KCTAZ	EMPLOYMENT				
		2003	2013	2013-2003 CHANGE	2023	2023-2003 CHANGE
Southwest	95	10	44	34	78	68
Southwest	96	0	0	0	0	0
Southwest	97	8	36	28	64	56
Southwest	98	3	12	10	22	19
Southwest	99	42	84	41	125	83
Southwest	100	0	0	0	0	0
Southwest	101	96	80	-17	63	-33
Southwest	102	35	151	116	267	232
Southwest	103	50	89	40	129	79
Southwest	104	0	0	0	0	0
Southwest	105	3	12	9	21	19
Southwest	106	267	1155	889	2044	1777
Aurora Area	107	0	0	0	0	0
Aurora Area	108	3	14	10	24	21
Aurora Area	109	146	73	-73	0	-146
Aurora Area	110	313	214	-99	114	-199
Aurora Area	111	4	16	12	28	24
Aurora Area	112	0	0	0	0	0
Aurora Area	113	26	111	85	196	170
Aurora Area	114	29	25	-4	21	-7
Southwest	115	0	0	0	0	0
West Central	116	146	73	-73	0	-146
West Central	117	7	29	23	52	45
West Central	118	0	0	0	0	0
West Central	119	12	53	40	93	81
West Central	120	33	141	109	250	217
West Central	121	0	0	0	0	0
West Central	122	129	181	52	233	104
West Central	123	132	163	32	195	63
Southwest	124	18	79	60	139	121
West Central	125	52	26	-26	0	-52
West Central	126	5	21	16	37	32
West Central	127	20	10	-10	0	-20
West Central	128	1	3	3	6	5
West Central	129	11	46	35	81	70
West Central	130	635	437	-198	239	-396
West Central	131	0	0	0	0	0
West Central	132	42	181	139	320	278
West Central	133	0	0	0	0	0
West Central	134	0	0	0	0	0
West Central	135	6	26	20	46	40
Tri-Cities	136	0	0	0	0	0
Tri-Cities	137	0	0	0	0	0
Tri-Cities	138	137	69	-69	0	-137
Tri-Cities	139	0	0	0	0	0
Tri-Cities	140	0	2	1	3	3
Tri-Cities	141	0	0	0	0	0
Tri-Cities	142	65	283	217	500	435
Tri-Cities	143	114	57	-57	0	-114

Service Area	KCTAZ	EMPLOYMENT				
		2003	2013	2013-2003 CHANGE	2023	2023-2003 CHANGE
Tri-Cities	144	0	0	0	0	0
Tri-Cities	145	26	112	87	199	173
Tri-Cities	146	0	0	0	0	0
Tri-Cities	147	0	0	0	0	0
Tri-Cities	148	0	0	0	0	0
Tri-Cities	149	0	0	0	0	0
Tri-Cities	150	31	135	103	238	207
West Central	151	77	39	-39	0	-77
West Central	152	0	0	0	0	0
West Central	153	0	0	0	0	0
West Central	154	40	175	135	310	270
West Central	155	12	53	40	93	81
West Central	156	11	46	35	81	70
West Central	157	0	0	0	0	0
West Central	158	0	0	0	0	0
West Central	159	0	0	0	0	0
West Central	160	6	27	21	48	42
West Central	161	26	13	-13	0	-26
West Central	162	5	23	18	41	36
West Central	163	5	20	15	35	30
Campton Hills	164	0	0	0	0	0
Campton Hills	165	25	107	83	190	165
Campton Hills	166	9	41	31	72	63
Campton Hills	167	0	0	0	0	0
Campton Hills	168	43	185	142	327	284
West Central	169	26	13	-13	0	-26
Campton Hills	170	0	0	0	0	0
Campton Hills	171	20	88	68	156	136
Campton Hills	172	3	12	9	21	18
Campton Hills	173	0	0	0	0	0
Campton Hills	174	0	0	0	0	0
Tri-Cities	175	4	19	15	34	30
Campton Hills	176	0	0	0	0	0
Campton Hills	177	0	0	0	0	0
Campton Hills	178	7	32	24	56	49
Campton Hills	179	0	0	0	0	0
Campton Hills	180	15	67	51	118	103
Campton Hills	181	1	5	3	8	7
Campton Hills	182	0	0	0	0	0
Campton Hills	183	0	0	0	0	0
Tri-Cities	184	0	0	0	0	0
Campton Hills	185	0	0	0	0	0
Campton Hills	186	0	0	0	0	0
Campton Hills	187	0	0	0	0	0
Campton Hills	188	0	0	0	0	0
Campton Hills	189	0	0	0	0	0
West Central	190	0	0	0	0	0
West Central	191	90	166	76	242	152
Northwest	192	2	8	7	15	13

Service Area	KCTAZ	EMPLOYMENT				
		2003	2013	2013-2003 CHANGE	2023	2023-2003 CHANGE
West Central	193	158	186	29	215	57
Northwest	194	0	0	0	0	0
Northwest	195	26	13	-13	0	-26
Northwest	196	6	24	19	43	37
Campton Hills	197	7	28	22	50	43
Campton Hills	198	0	0	0	0	0
Campton Hills	199	0	2	1	3	3
Campton Hills	200	31	35	3	38	7
Northwest	201	10	44	34	78	68
Campton Hills	202	0	0	0	0	0
Campton Hills	203	1	2	2	4	3
Campton Hills	204	18	79	61	140	122
Northwest	205	17	75	58	133	115
Campton Hills	206	0	0	0	0	0
Campton Hills	207	8	34	26	60	52
Northwest	208	17	75	57	132	115
Northwest	209	169	734	565	1299	1130
Northwest	210	294	1274	980	2254	1960
Northwest	211	130	138	7	145	15
Northwest	212	0	0	0	0	0
Upper Fox	213	259	797	537	1334	1075
Upper Fox	214	352	862	510	1372	1020
Northwest	215	7	28	22	50	44
Northwest	216	0	0	0	0	0
Northwest	217	4	18	14	32	28
Northwest	218	2	7	6	13	11
Northwest	219	2	7	6	13	11
Upper Fox	220	47	104	57	161	114
Upper Fox	221	429	377	-51	326	-102
Upper Fox	222	20	10	-10	0	-20
Upper Fox	223	43	187	143	330	287
Upper Fox	224	513	380	-133	248	-266
Upper Fox	225	46	32	-14	18	-28
Upper Fox	226	18	79	61	141	122
Upper Fox	227	0	0	0	0	0
Upper Fox	228	0	0	0	0	0
Aurora Area	229	619	497	-122	375	-244
Aurora Area	230	187	281	94	375	188
Aurora Area	231	380	378	-3	375	-5
Aurora Area	232	298	337	38	375	77
Aurora Area	233	0	0	0	0	0
Aurora Area	234	26	13	-13	0	-26
Aurora Area	235	5	21	16	37	32
Aurora Area	236	24	48	24	73	48
Aurora Area	237	201	600	400	1000	799
Aurora Area	238	3493	2247	-1247	1000	-2493
Aurora Area	239	130	565	435	1000	870
Aurora Area	240	130	565	435	1000	870
Aurora Area	241	356	204	-152	52	-304

Service Area	KCTAZ	EMPLOYMENT				
		2003	2013	2013-2003 CHANGE	2023	2023-2003 CHANGE
Aurora Area	242	6	26	20	46	40
Aurora Area	243	144	166	21	187	42
Aurora Area	244	22	93	72	165	144
Aurora Area	245	82	353	272	625	543
Aurora Area	246	82	353	272	625	543
Aurora Area	247	82	353	272	625	543
Aurora Area	248	2252	1438	-813	625	-1627
Aurora Area	249	703	577	-127	450	-253
Aurora Area	250	59	254	196	450	391
Aurora Area	251	59	254	196	450	391
Aurora Area	252	59	254	196	450	391
Aurora Area	253	363	518	155	673	310
Aurora Area	254	858	1369	511	1880	1022
Aurora Area	255	736	1187	451	1638	902
Aurora Area	256	83	362	278	640	557
Aurora Area	257	42	184	141	325	283
Aurora Area	258	62	194	131	325	263
Aurora Area	259	293	309	16	325	32
Aurora Area	260	899	612	-287	325	-574
Aurora Area	261	697	371	-327	44	-653
Aurora Area	262	70	71	1	72	1
Aurora Area	263	7	30	23	54	47
Aurora Area	264	153	251	99	350	197
Aurora Area	265	81	56	-25	31	-50
Aurora Area	266	69	61	-8	52	-16
Aurora Area	267	37	82	46	128	91
Aurora Area	268	0	0	0	0	0
Aurora Area	269	19	82	63	144	126
Aurora Area	270	27	116	89	206	179
Aurora Area	271	50	215	165	380	330
Aurora Area	272	713	422	-291	131	-582
Aurora Area	273	10	45	35	80	70
Aurora Area	274	7	31	23	54	47
Aurora Area	275	724	665	-60	605	-119
Aurora Area	276	76	143	67	210	134
Aurora Area	277	55	240	185	425	370
Aurora Area	278	797	611	-186	425	-372
Aurora Area	279	744	585	-160	425	-319
Aurora Area	280	78	252	173	425	347
Aurora Area	281	685	626	-60	566	-119
Aurora Area	282	1818	1760	-58	1702	-116
Aurora Area	283	144	202	58	259	115
Aurora Area	284	539	568	30	598	59
Aurora Area	285	773	735	-38	697	-75
Aurora Area	286	79	180	101	281	202
Aurora Area	287	1725	1442	-283	1158	-567
Aurora Area	288	956	867	-89	777	-179
Aurora Area	289	439	434	-5	429	-10
Aurora Area	290	679	568	-110	458	-221

Service Area	KCTAZ	EMPLOYMENT				
		2003	2013	2013-2003 CHANGE	2023	2023-2003 CHANGE
Aurora Area	291	629	404	-225	179	-450
Aurora Area	292	83	148	66	214	132
Aurora Area	293	120	520	400	920	800
Aurora Area	294	875	609	-266	344	-532
Aurora Area	295	2474	2309	-165	2144	-331
Aurora Area	296	939	836	-103	733	-206
Aurora Area	297	0	0	0	0	0
Aurora Area	298	5	22	17	39	34
Aurora Area	299	545	1130	584	1714	1169
Aurora Area	300	1429	1437	8	1445	16
Aurora Area	301	2	11	8	19	17
Aurora Area	302	137	107	-30	77	-60
Aurora Area	303	43	35	-8	27	-16
Aurora Area	304	33	143	110	253	220
Aurora Area	305	203	351	149	500	297
Aurora Area	306	1621	1060	-560	500	-1121
Aurora Area	307	111	306	194	500	389
Aurora Area	308	135	317	183	500	365
Aurora Area	309	10253	6751	-3501	3250	-7003
Aurora Area	310	1133	2192	1058	3250	2117
Aurora Area	311	970	2110	1140	3250	2280
Aurora Area	312	580	1915	1335	3250	2670
Aurora Area	313	396	403	7	410	14
Aurora Area	314	942	1069	127	1196	254
Aurora Area	315	213	317	104	421	208
Aurora Area	316	526	357	-170	187	-339
Aurora Area	317	260	531	272	803	543
Aurora Area	318	0	0	0	0	0
Aurora Area	319	603	469	-134	335	-267
Aurora Area	320	79	104	25	129	51
Aurora Area	321	136	76	-60	16	-120
Aurora Area	322	100	50	-50	0	-100
Aurora Area	323	1	6	5	11	9
Aurora Area	324	137	69	-69	0	-137
Aurora Area	325	13	56	43	99	86
Aurora Area	326	127	313	187	500	373
Aurora Area	327	1500	1000	-500	500	-1000
Aurora Area	328	108	304	196	500	392
Aurora Area	329	291	396	104	500	209
Aurora Area	330	80	96	16	111	32
Aurora Area	331	3	12	9	21	18
Aurora Area	332	154	105	-48	57	-97
Aurora Area	333	90	155	64	219	129
Aurora Area	334	222	411	189	600	378
Aurora Area	335	1595	1097	-497	600	-995
Aurora Area	336	350	475	125	600	250
Aurora Area	337	224	412	188	600	376
Aurora Area	338	85	118	33	150	66
Aurora Area	339	62	31	-31	0	-62

Service Area	KCTAZ	EMPLOYMENT				
		2003	2013	2013-2003 CHANGE	2023	2023-2003 CHANGE
Aurora Area	340	218	350	132	482	263
Aurora Area	341	411	427	16	444	33
Aurora Area	342	3763	3732	-32	3700	-63
Aurora Area	343	16	70	54	123	107
Aurora Area	344	12	51	39	90	78
Aurora Area	345	88	381	293	674	586
Aurora Area	346	0	0	0	0	0
Aurora Area	347	20	10	-10	0	-20
Aurora Area	348	0	0	0	0	0
Aurora Area	349	1	3	2	4	4
Aurora Area	350	138	69	-69	0	-138
Aurora Area	351	285	349	64	413	128
Aurora Area	352	229	397	169	566	337
Aurora Area	353	38	165	127	292	254
Aurora Area	354	129	171	43	214	85
Aurora Area	355	1084	1509	425	1934	850
Aurora Area	356	242	147	-96	51	-191
Aurora Area	357	90	72	-18	54	-36
Aurora Area	358	26	13	-13	0	-26
Aurora Area	359	599	355	-244	111	-487
Aurora Area	360	561	959	399	1358	797
Aurora Area	361	0	0	0	0	0
Aurora Area	362	615	453	-163	290	-325
Aurora Area	363	39	168	129	296	258
Aurora Area	364	195	120	-75	45	-149
Aurora Area	365	42	102	60	161	119
Aurora Area	366	55	237	182	419	365
Tri-Cities	367	0	0	0	0	0
Tri-Cities	368	0	0	0	0	0
Tri-Cities	369	0	0	0	0	0
Tri-Cities	370	26	13	-13	0	-26
Tri-Cities	371	0	0	0	0	0
Tri-Cities	372	0	0	0	0	0
Tri-Cities	373	0	0	0	0	0
Tri-Cities	374	0	0	0	0	0
Tri-Cities	375	0	0	0	0	0
Tri-Cities	376	0	0	0	0	0
Tri-Cities	377	32	139	107	246	214
Tri-Cities	378	38	164	127	291	253
Tri-Cities	379	0	0	0	0	0
Tri-Cities	380	137	69	-69	0	-137
Tri-Cities	381	984	989	5	994	10
Tri-Cities	382	155	113	-43	70	-85
Tri-Cities	383	0	0	0	0	0
Tri-Cities	384	83	360	277	637	554
Tri-Cities	385	16	71	55	125	109
Tri-Cities	386	64	278	214	493	428
Tri-Cities	387	17	8	-8	0	-17
Tri-Cities	388	713	495	-218	277	-436

Service Area	KCTAZ	EMPLOYMENT				
		2003	2013	2013-2003 CHANGE	2023	2023-2003 CHANGE
Tri-Cities	389	530	403	-127	275	-254
Tri-Cities	390	88	382	293	675	587
Tri-Cities	391	88	382	293	675	587
Tri-Cities	392	2423	1549	-874	675	-1748
Tri-Cities	393	88	382	293	675	587
Aurora Area	394	77	39	-39	0	-77
Tri-Cities	395	1	2	2	4	3
Aurora Area	396	3	12	10	22	19
Tri-Cities	397	0	0	0	0	0
Tri-Cities	398	0	0	0	0	0
Tri-Cities	399	21	92	70	162	141
Tri-Cities	400	172	744	572	1316	1144
Tri-Cities	401	158	127	-32	95	-63
Tri-Cities	402	79	94	14	108	29
Tri-Cities	403	477	738	261	999	522
Tri-Cities	404	29	127	98	225	196
Tri-Cities	405	489	891	403	1294	805
Tri-Cities	406	163	144	-18	126	-37
Tri-Cities	407	17	75	58	134	116
Tri-Cities	408	0	0	0	0	0
Tri-Cities	409	123	62	-62	0	-123
Tri-Cities	410	1044	709	-334	375	-669
Tri-Cities	411	69	222	153	375	306
Tri-Cities	412	72	223	152	375	303
Tri-Cities	413	294	335	40	375	81
Tri-Cities	414	9	40	31	71	62
Tri-Cities	415	140	81	-60	21	-119
Tri-Cities	416	33	81	49	130	97
Tri-Cities	417	30	44	14	58	28
Aurora Area	418	70	225	156	381	311
Tri-Cities	419	20	10	-10	0	-20
Aurora Area	420	94	408	313	721	627
Tri-Cities	421	26	13	-13	0	-26
Tri-Cities	422	25	30	6	36	11
Tri-Cities	423	144	546	402	948	804
Tri-Cities	424	122	527	405	932	810
Tri-Cities	425	861	746	-116	630	-231
Tri-Cities	426	360	718	357	1075	715
Tri-Cities	427	811	943	132	1075	264
Tri-Cities	428	204	639	436	1075	871
Tri-Cities	429	2947	2011	-936	1075	-1872
Tri-Cities	430	21	92	71	163	142
Tri-Cities	431	37	160	123	283	246
Tri-Cities	432	61	89	27	116	55
Tri-Cities	433	86	285	200	485	399
Tri-Cities	434	1435	930	-505	425	-1010
Tri-Cities	435	92	258	167	425	333
Tri-Cities	436	141	283	142	425	284
Tri-Cities	437	55	240	185	425	370

Service Area	KCTAZ	EMPLOYMENT				
		2003	2013	2013-2003 CHANGE	2023	2023-2003 CHANGE
Tri-Cities	438	320	810	490	1300	980
Tri-Cities	439	538	919	381	1300	762
Tri-Cities	440	3714	2507	-1207	1300	-2414
Tri-Cities	441	654	977	323	1300	646
Tri-Cities	442	184	194	10	204	20
Tri-Cities	443	0	0	0	0	0
Tri-Cities	444	0	0	0	0	0
Tri-Cities	445	20	88	68	156	136
Tri-Cities	446	9	39	30	69	60
Tri-Cities	447	36	57	21	78	42
Tri-Cities	448	133	151	18	169	36
Tri-Cities	449	25	107	83	190	165
Tri-Cities	450	150	238	89	327	177
Tri-Cities	451	147	636	489	1125	978
Tri-Cities	452	147	636	489	1125	978
Tri-Cities	453	2896	2011	-886	1125	-1771
Tri-Cities	454	1276	1201	-76	1125	-151
Tri-Cities	455	0	0	0	0	0
Tri-Cities	456	0	0	0	0	0
Tri-Cities	457	0	0	0	0	0
Tri-Cities	458	60	262	201	463	403
Tri-Cities	459	545	369	-176	193	-352
Tri-Cities	460	0	0	0	0	0
Tri-Cities	461	307	434	127	561	254
Tri-Cities	462	23	23	0	23	0
Tri-Cities	463	251	161	-90	71	-180
Tri-Cities	464	23	22	0	22	-1
Tri-Cities	465	20	10	-10	0	-20
Tri-Cities	466	0	0	0	0	0
Tri-Cities	467	0	0	0	0	0
Tri-Cities	468	0	0	0	0	0
Tri-Cities	469	921	698	-223	475	-446
Tri-Cities	470	2101	1288	-813	475	-1626
Tri-Cities	471	173	324	151	475	302
Tri-Cities	472	554	515	-40	475	-79
Tri-Cities	473	1207	1203	-3	1200	-7
Tri-Cities	474	210	306	97	403	193
Tri-Cities	475	37	162	125	287	250
Tri-Cities	476	0	0	0	0	0
Tri-Cities	477	245	123	-123	0	-245
Tri-Cities	478	93	227	134	361	268
Tri-Cities	479	50	44	-7	37	-13
Tri-Cities	480	0	0	0	0	0
Campton Hills	481	0	0	0	0	0
Campton Hills	482	7	31	24	55	48
Campton Hills	483	26	13	-13	0	-26
Tri-Cities	484	52	227	175	402	350
Tri-Cities	485	0	0	0	0	0
Tri-Cities	486	135	587	451	1038	903

Service Area	KCTAZ	EMPLOYMENT				
		2003	2013	2013-2003 CHANGE	2023	2023-2003 CHANGE
Tri-Cities	487	773	387	-387	0	-773
Tri-Cities	488	23	102	78	180	157
Tri-Cities	489	0	0	0	0	0
Tri-Cities	490	214	369	155	524	310
Tri-Cities	491	100	96	-3	93	-7
Tri-Cities	492	7	29	23	52	45
Campton Hills	493	0	0	0	0	0
Campton Hills	494	12	50	39	89	77
Campton Hills	495	0	0	0	0	0
Campton Hills	496	0	0	0	0	0
Campton Hills	497	1	3	2	5	4
Campton Hills	498	0	0	0	0	0
Tri-Cities	499	505	590	85	675	170
Tri-Cities	500	615	645	30	675	60
Tri-Cities	501	114	395	280	675	561
Tri-Cities	502	1434	1055	-380	675	-759
Tri-Cities	503	479	825	347	1172	693
Tri-Cities	504	131	103	-27	76	-55
Tri-Cities	505	814	518	-296	222	-592
Tri-Cities	506	113	67	-46	21	-92
Tri-Cities	507	65	33	-33	0	-65
Tri-Cities	508	14	62	48	110	96
Tri-Cities	509	43	21	-21	0	-43
Campton Hills	510	56	244	187	431	375
Tri-Cities	511	46	97	52	149	103
Tri-Cities	512	1311	1129	-181	948	-363
Tri-Cities	513	28	23	-6	17	-11
Tri-Cities	514	52	44	-9	35	-17
Tri-Cities	515	3097	2173	-923	1250	-1847
Tri-Cities	516	163	707	543	1250	1087
Tri-Cities	517	1380	1315	-65	1250	-130
Tri-Cities	518	364	807	443	1250	886
Tri-Cities	519	0	0	0	0	0
Tri-Cities	520	0	0	0	0	0
Tri-Cities	521	72	314	241	555	483
Tri-Cities	522	0	0	0	0	0
Tri-Cities	523	146	634	488	1121	975
Tri-Cities	524	22	93	72	165	143
Tri-Cities	525	20	10	-10	0	-20
Tri-Cities	526	10	44	34	78	68
Tri-Cities	527	0	0	0	0	0
Campton Hills	528	51	157	106	263	212
Tri-Cities	529	17	73	57	130	113
Tri-Cities	530	7	29	23	52	45
Tri-Cities	531	4	16	13	29	25
Tri-Cities	532	201	131	-70	61	-140
Tri-Cities	533	693	814	121	935	242
Tri-Cities	534	0	0	0	0	0
Tri-Cities	535	903	1088	184	1272	369

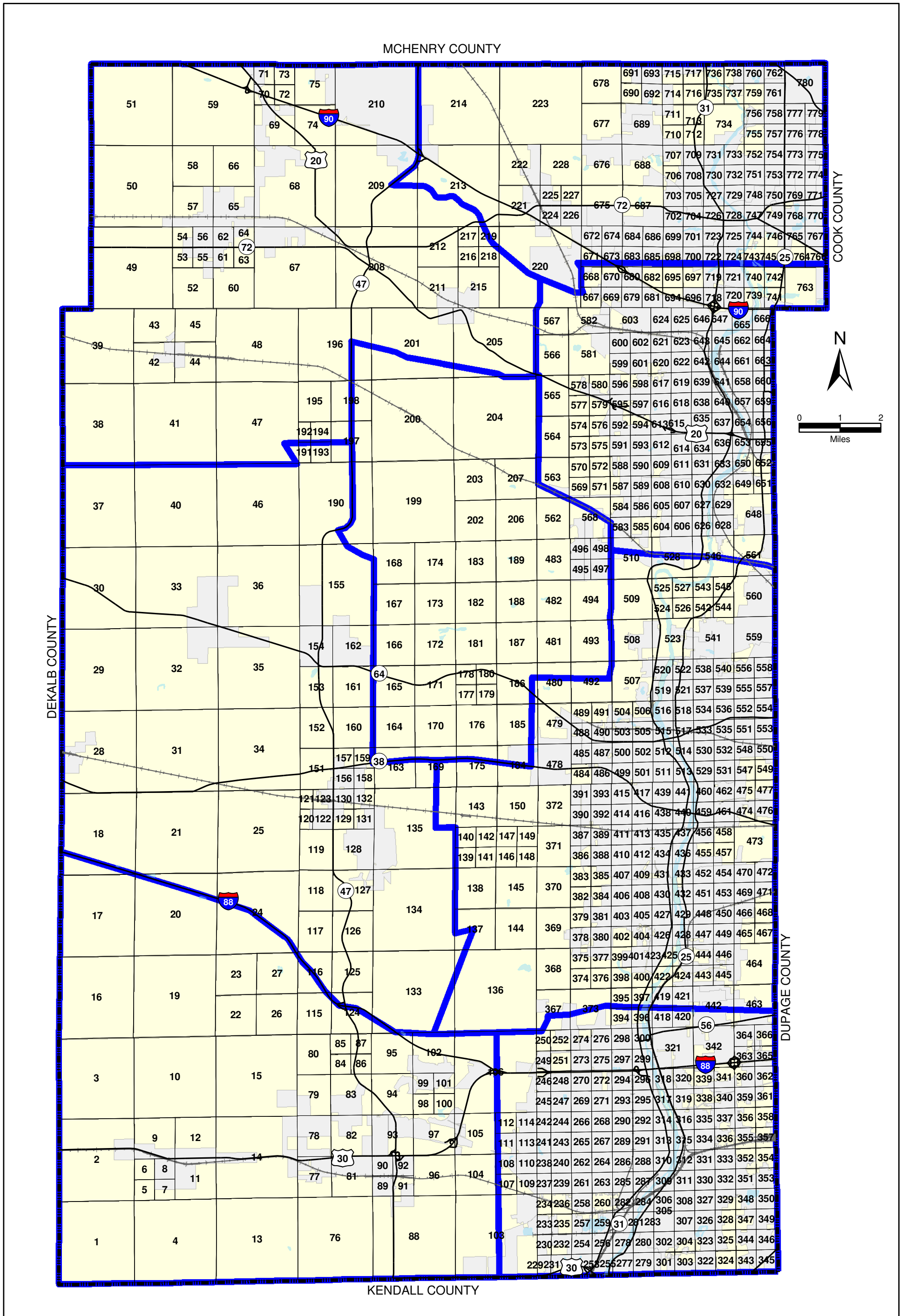
Service Area	KCTAZ	EMPLOYMENT				
		2003	2013	2013-2003 CHANGE	2023	2023-2003 CHANGE
Tri-Cities	536	243	478	235	713	470
Tri-Cities	537	2315	1483	-833	650	-1665
Tri-Cities	538	85	367	283	650	565
Tri-Cities	539	105	377	273	650	545
Tri-Cities	540	85	367	283	650	565
Tri-Cities	541	22	18	-4	14	-8
Tri-Cities	542	9	40	31	71	62
Tri-Cities	543	25	107	83	190	165
Tri-Cities	544	0	0	0	0	0
Tri-Cities	545	0	2	1	3	3
Greater Elgin	546	49	211	162	373	324
Tri-Cities	547	225	550	325	875	650
Tri-Cities	548	715	795	80	875	160
Tri-Cities	549	114	495	380	875	761
Tri-Cities	550	2424	1649	-774	875	-1549
Tri-Cities	551	2622	1998	-623	1375	-1247
Tri-Cities	552	1224	1299	76	1375	151
Tri-Cities	553	1378	1377	-2	1375	-3
Tri-Cities	554	265	820	555	1375	1110
Tri-Cities	555	517	412	-106	306	-211
Tri-Cities	556	0	0	0	0	0
Tri-Cities	557	0	1	0	1	1
Tri-Cities	558	47	23	-23	0	-47
Tri-Cities	559	83	272	190	462	379
Tri-Cities	560	0	0	0	0	0
Greater Elgin	561	169	461	292	753	584
Campton Hills	562	0	0	0	0	0
Greater Elgin	563	4	18	14	32	28
Greater Elgin	564	0	0	0	0	0
Greater Elgin	565	0	0	0	0	0
Greater Elgin	566	100	434	333	767	667
Greater Elgin	567	238	231	-7	224	-14
Campton Hills	568	4	19	15	34	30
Greater Elgin	569	0	0	0	0	0
Greater Elgin	570	0	0	0	0	0
Greater Elgin	571	0	0	0	0	0
Greater Elgin	572	0	0	0	0	0
Greater Elgin	573	0	0	0	0	0
Greater Elgin	574	0	0	0	0	0
Greater Elgin	575	0	0	0	0	0
Greater Elgin	576	0	0	0	0	0
Greater Elgin	577	0	0	0	0	0
Greater Elgin	578	41	176	136	312	271
Greater Elgin	579	142	89	-53	35	-107
Greater Elgin	580	4	18	14	32	28
Greater Elgin	581	148	402	254	656	508
Greater Elgin	582	148	110	-37	73	-75
Greater Elgin	583	71	229	159	388	317
Greater Elgin	584	32	137	106	243	211

Service Area	KCTAZ	EMPLOYMENT				
		2003	2013	2013-2003 CHANGE	2023	2023-2003 CHANGE
Greater Elgin	585	123	147	24	171	48
Greater Elgin	586	62	271	208	479	417
Greater Elgin	587	0	0	0	0	0
Greater Elgin	588	95	413	317	730	635
Greater Elgin	589	53	231	178	409	356
Greater Elgin	590	7	30	23	53	46
Greater Elgin	591	98	424	326	750	652
Greater Elgin	592	560	655	95	750	190
Greater Elgin	593	2152	1451	-701	750	-1402
Greater Elgin	594	114	432	318	750	636
Greater Elgin	595	1752	1126	-626	500	-1252
Greater Elgin	596	85	293	207	500	415
Greater Elgin	597	937	719	-219	500	-437
Greater Elgin	598	65	283	217	500	435
Greater Elgin	599	18	80	61	141	123
Greater Elgin	600	240	1041	801	1842	1601
Greater Elgin	601	251	168	-83	85	-166
Greater Elgin	602	26	111	85	196	170
Greater Elgin	603	769	853	83	936	167
Greater Elgin	604	0	0	0	0	0
Greater Elgin	605	167	256	88	344	177
Greater Elgin	606	0	0	0	0	0
Greater Elgin	607	267	251	-17	234	-33
Greater Elgin	608	34	146	112	258	224
Greater Elgin	609	169	733	564	1297	1128
Greater Elgin	610	524	652	127	779	255
Greater Elgin	611	287	642	356	998	711
Greater Elgin	612	411	810	398	1208	797
Greater Elgin	613	809	855	46	901	92
Greater Elgin	614	24	105	81	186	162
Greater Elgin	615	129	222	93	315	186
Greater Elgin	616	976	1376	400	1776	800
Greater Elgin	617	311	310	-1	309	-2
Greater Elgin	618	694	516	-177	339	-355
Greater Elgin	619	404	415	12	427	23
Greater Elgin	620	1540	1182	-357	825	-715
Greater Elgin	621	397	611	214	825	428
Greater Elgin	622	194	509	316	825	631
Greater Elgin	623	1210	1018	-193	825	-385
Greater Elgin	624	1290	1018	-272	746	-543
Greater Elgin	625	23	40	17	56	33
Greater Elgin	626	0	0	0	0	0
Greater Elgin	627	294	463	168	631	337
Greater Elgin	628	0	0	0	0	0
Greater Elgin	629	180	353	173	526	346
Greater Elgin	630	3467	2259	-1209	1050	-2417
Greater Elgin	631	360	705	345	1050	690
Greater Elgin	632	271	660	390	1050	779
Greater Elgin	633	137	593	457	1050	913

Service Area	KCTAZ	EMPLOYMENT				
		2003	2013	2013-2003 CHANGE	2023	2023-2003 CHANGE
Greater Elgin	634	0	0	0	0	0
Greater Elgin	635	87	55	-32	23	-64
Greater Elgin	636	2489	2254	-236	2018	-471
Greater Elgin	637	123	151	27	178	55
Greater Elgin	638	464	448	-16	431	-33
Greater Elgin	639	6	27	21	49	42
Greater Elgin	640	1351	2048	697	2745	1394
Greater Elgin	641	2255	2190	-66	2124	-131
Greater Elgin	642	359	298	-61	237	-122
Greater Elgin	643	1565	2550	986	3536	1971
Greater Elgin	644	484	324	-160	164	-320
Greater Elgin	645	320	369	49	418	98
Greater Elgin	646	579	401	-177	224	-355
Greater Elgin	647	66	288	222	510	443
Greater Elgin	648	5	22	17	39	34
Greater Elgin	649	20	10	-10	0	-20
Greater Elgin	650	2	11	8	19	17
Greater Elgin	651	18	79	61	140	122
Greater Elgin	652	1138	987	-151	836	-302
Greater Elgin	653	260	188	-72	116	-144
Greater Elgin	654	234	242	9	251	18
Greater Elgin	655	620	718	99	817	197
Greater Elgin	656	9	39	30	69	60
Greater Elgin	657	6251	4250	-2000	2250	-4001
Greater Elgin	658	1532	1891	359	2250	718
Greater Elgin	659	695	1473	777	2250	1555
Greater Elgin	660	598	1424	826	2250	1652
Greater Elgin	661	491	1083	592	1675	1184
Greater Elgin	662	3835	2755	-1080	1675	-2160
Greater Elgin	663	1853	1764	-89	1675	-178
Greater Elgin	664	479	1077	598	1675	1196
Greater Elgin	665	674	532	-141	391	-283
Greater Elgin	666	189	127	-62	65	-125
Greater Elgin	667	0	0	0	0	0
Greater Elgin	668	0	0	0	0	0
Greater Elgin	669	0	0	0	0	0
Greater Elgin	670	258	1117	859	1977	1719
Upper Fox	671	56	241	185	426	370
Upper Fox	672	26	13	-13	0	-26
Upper Fox	673	56	241	185	426	370
Upper Fox	674	77	333	256	589	512
Upper Fox	675	10	45	35	80	70
Upper Fox	676	8	36	28	64	56
Upper Fox	677	20	10	-10	0	-20
Upper Fox	678	313	1357	1043	2400	2087
Greater Elgin	679	1757	1191	-566	625	-1132
Greater Elgin	680	193	409	216	625	432
Greater Elgin	681	82	353	272	625	543
Greater Elgin	682	464	545	80	625	161

Service Area	KCTAZ	EMPLOYMENT				
		2003	2013	2013-2003 CHANGE	2023	2023-2003 CHANGE
Upper Fox	683	3	12	10	22	19
Upper Fox	684	47	23	-23	0	-47
Upper Fox	685	38	19	-19	0	-38
Upper Fox	686	0	0	0	0	0
Upper Fox	687	82	58	-24	34	-48
Upper Fox	688	6	28	21	49	43
Upper Fox	689	166	184	19	203	37
Upper Fox	690	7	32	24	56	49
Upper Fox	691	37	160	123	283	246
Upper Fox	692	13	55	43	98	85
Upper Fox	693	57	247	190	437	380
Greater Elgin	694	3107	2178	-928	1250	-1857
Greater Elgin	695	163	707	543	1250	1087
Greater Elgin	696	1576	1413	-163	1250	-326
Greater Elgin	697	179	714	536	1250	1071
Upper Fox	698	4	19	14	33	29
Upper Fox	699	0	0	0	0	0
Upper Fox	700	0	0	0	0	0
Upper Fox	701	0	0	0	0	0
Upper Fox	702	0	0	0	0	0
Upper Fox	703	120	519	400	919	799
Upper Fox	704	142	614	473	1087	945
Upper Fox	705	255	154	-101	53	-202
Upper Fox	706	0	0	0	0	0
Upper Fox	707	43	87	43	130	87
Upper Fox	708	57	109	53	162	105
Upper Fox	709	0	0	0	0	0
Upper Fox	710	0	0	0	0	0
Upper Fox	711	0	0	0	0	0
Upper Fox	712	0	0	0	0	0
Upper Fox	713	0	0	0	0	0
Upper Fox	714	139	70	-70	0	-139
Upper Fox	715	167	86	-80	6	-161
Upper Fox	716	29	127	97	224	195
Upper Fox	717	21	13	-8	5	-16
Greater Elgin	718	229	490	260	750	521
Greater Elgin	719	98	424	326	750	652
Greater Elgin	720	2615	1683	-933	750	-1865
Greater Elgin	721	98	424	326	750	652
Upper Fox	722	84	42	-42	0	-84
Upper Fox	723	861	642	-219	423	-438
Upper Fox	724	0	0	0	0	0
Upper Fox	725	249	151	-98	53	-196
Upper Fox	726	2658	3598	940	4538	1880
Upper Fox	727	2467	2416	-50	2366	-101
Upper Fox	728	1155	1694	538	2232	1077
Upper Fox	729	700	652	-48	604	-96
Upper Fox	730	784	517	-267	250	-534
Upper Fox	731	59	154	96	250	191

Service Area	KCTAZ	EMPLOYMENT				
		2003	2013	2013-2003 CHANGE	2023	2023-2003 CHANGE
Upper Fox	732	33	141	109	250	217
Upper Fox	733	167	208	42	250	83
Upper Fox	734	0	0	0	0	0
Upper Fox	735	0	0	0	0	0
Upper Fox	736	0	0	0	0	0
Upper Fox	737	0	0	0	0	0
Upper Fox	738	77	39	-39	0	-77
Greater Elgin	739	0	0	0	0	0
Greater Elgin	740	0	0	0	0	0
Greater Elgin	741	152	659	507	1166	1014
Greater Elgin	742	4	18	14	32	28
Upper Fox	743	0	0	0	0	0
Upper Fox	744	103	211	108	319	216
Upper Fox	745	4	18	14	32	28
Upper Fox	746	96	168	71	239	143
Upper Fox	747	1470	1375	-95	1280	-190
Upper Fox	748	110	149	39	188	78
Upper Fox	749	111	208	97	305	194
Upper Fox	750	155	114	-42	72	-83
Upper Fox	751	2015	1307	-707	600	-1415
Upper Fox	752	78	339	261	600	522
Upper Fox	753	78	339	261	600	522
Upper Fox	754	207	403	197	600	393
Upper Fox	755	0	0	0	0	0
Upper Fox	756	141	364	223	587	446
Upper Fox	757	35	74	39	113	78
Upper Fox	758	68	46	-23	23	-45
Upper Fox	759	0	0	0	0	0
Upper Fox	760	3	14	11	25	22
Upper Fox	761	83	109	27	136	53
Upper Fox	762	104	366	261	627	523
Greater Elgin	763	58	252	194	446	388
Upper Fox	764	7	29	23	52	45
Upper Fox	765	196	848	653	1501	1305
Upper Fox	766	0	0	0	0	0
Upper Fox	767	799	1009	210	1219	420
Upper Fox	768	0	0	0	0	0
Upper Fox	769	0	0	0	0	0
Upper Fox	770	7	32	25	57	50
Upper Fox	771	31	132	102	234	203
Upper Fox	772	0	0	0	0	0
Upper Fox	773	36	69	33	102	66
Upper Fox	774	25	110	85	195	170
Upper Fox	775	0	0	0	0	0
Upper Fox	776	19	81	62	143	124
Upper Fox	777	16	71	55	126	110
Upper Fox	778	0	0	0	0	0
Upper Fox	779	0	0	0	0	0
Upper Fox	780	0	0	0	0	0

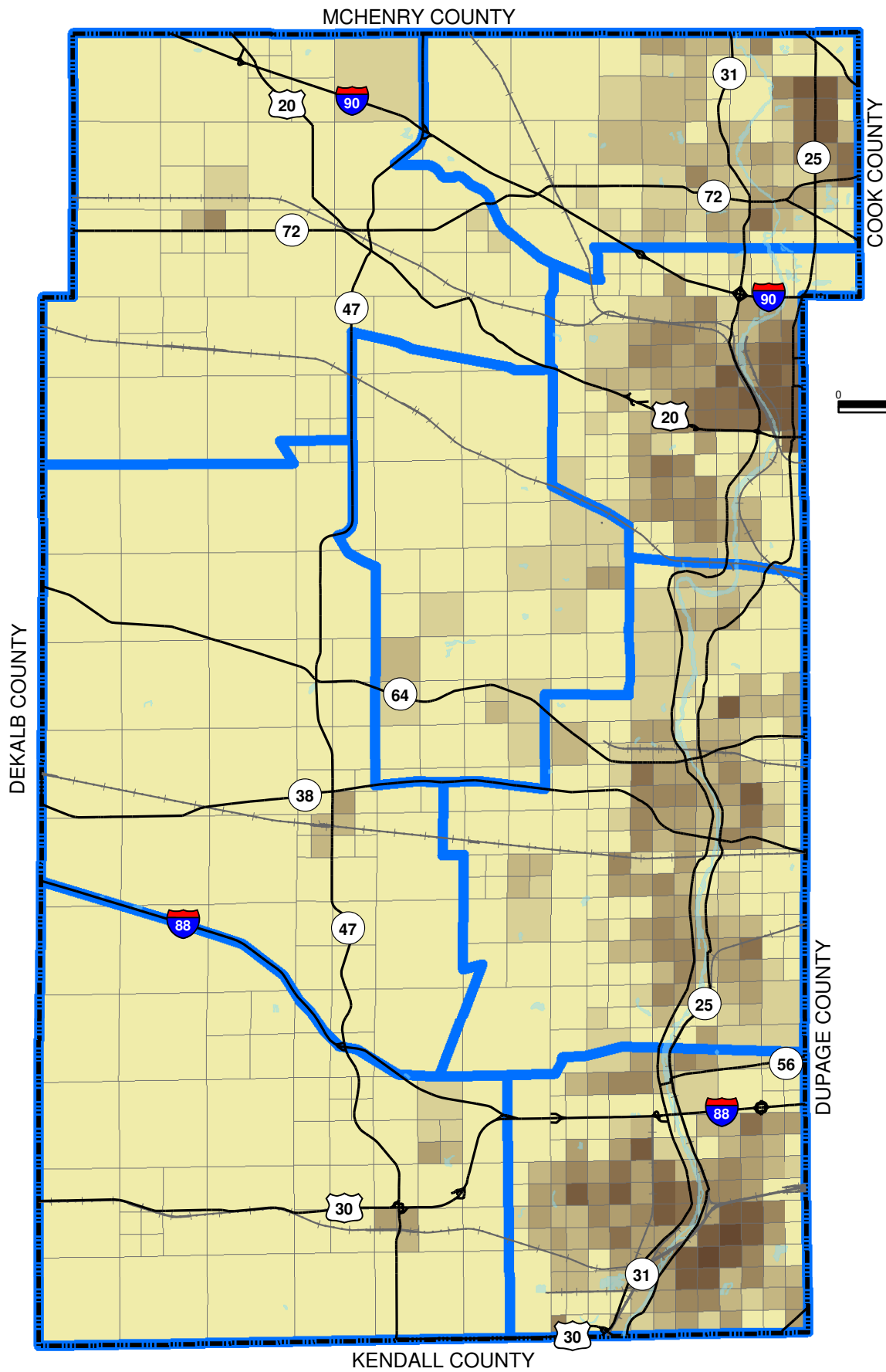


Legend
 Transportation Analysis Zone (TAZ)
 Incorporated Area
 Service Area Boundary

NOTE: The TAZ ID is shown for each TAZ.

Kane County Comprehensive Road Improvement Plan

Figure A-1
Kane County Transportation Analysis Zones

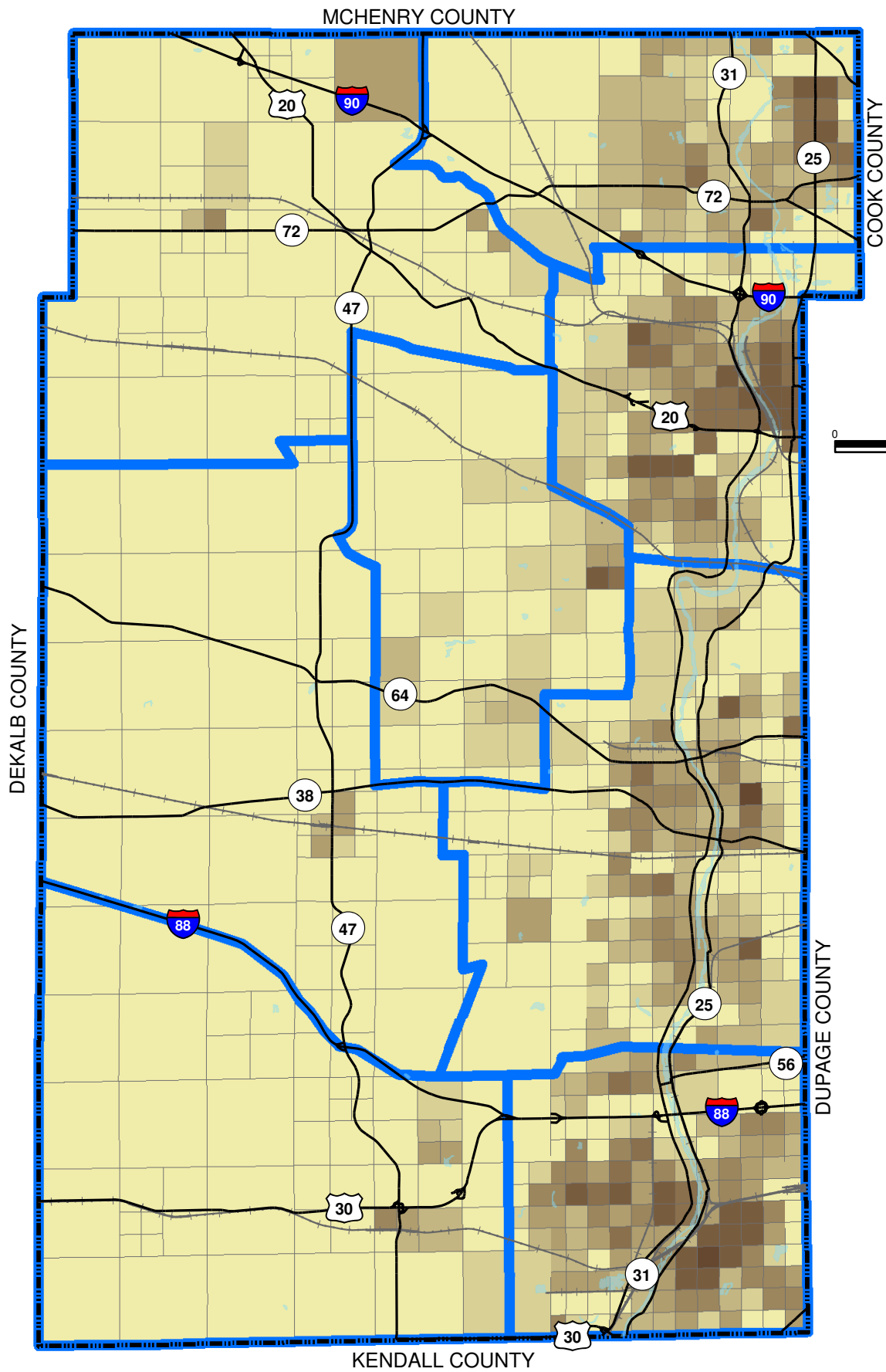


Population Density (People per Acre)



Kane County Comprehensive Road Improvement Plan

Figure A-2
Kane County 2003 Population Density

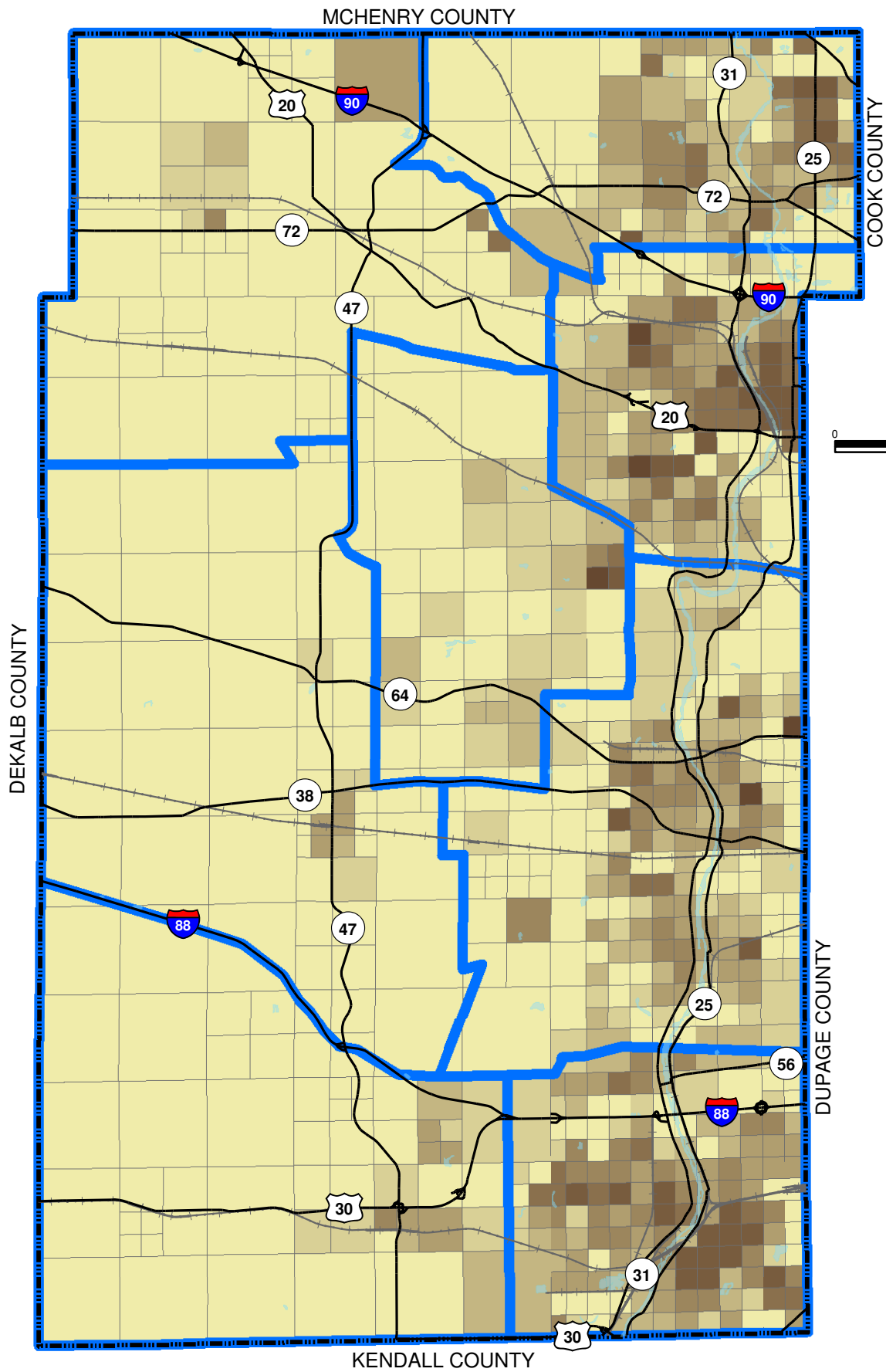


Population Density (People per Acre)



Kane County Comprehensive Road Improvement Plan

Figure A-3
Kane County Forecast Year 2013 Population Density

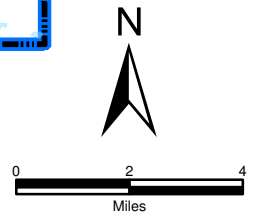
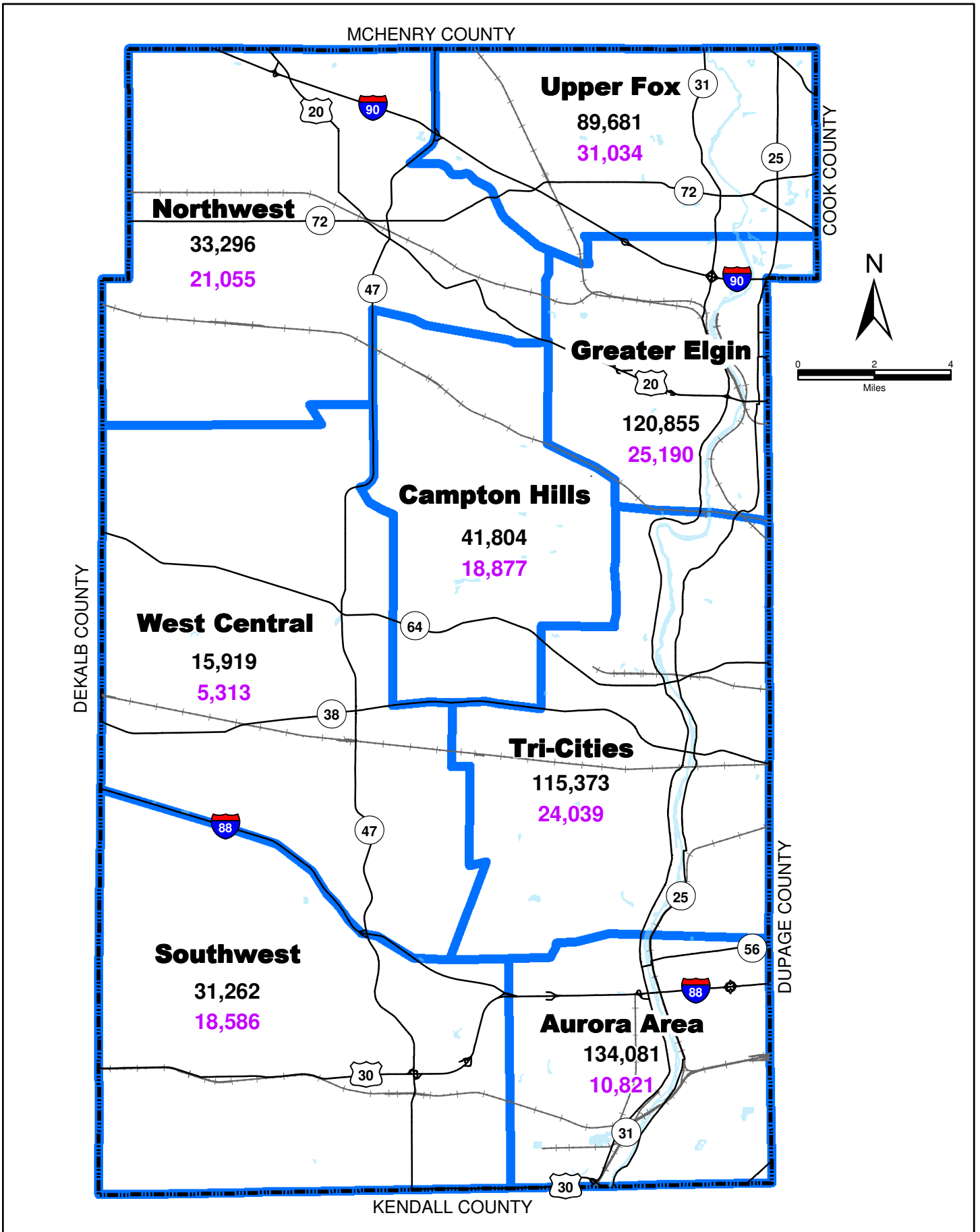


Population Density (People per Acre)



Kane County Comprehensive Road Improvement Plan

Figure A-4
Kane County Forecast Year 2023 Population Density



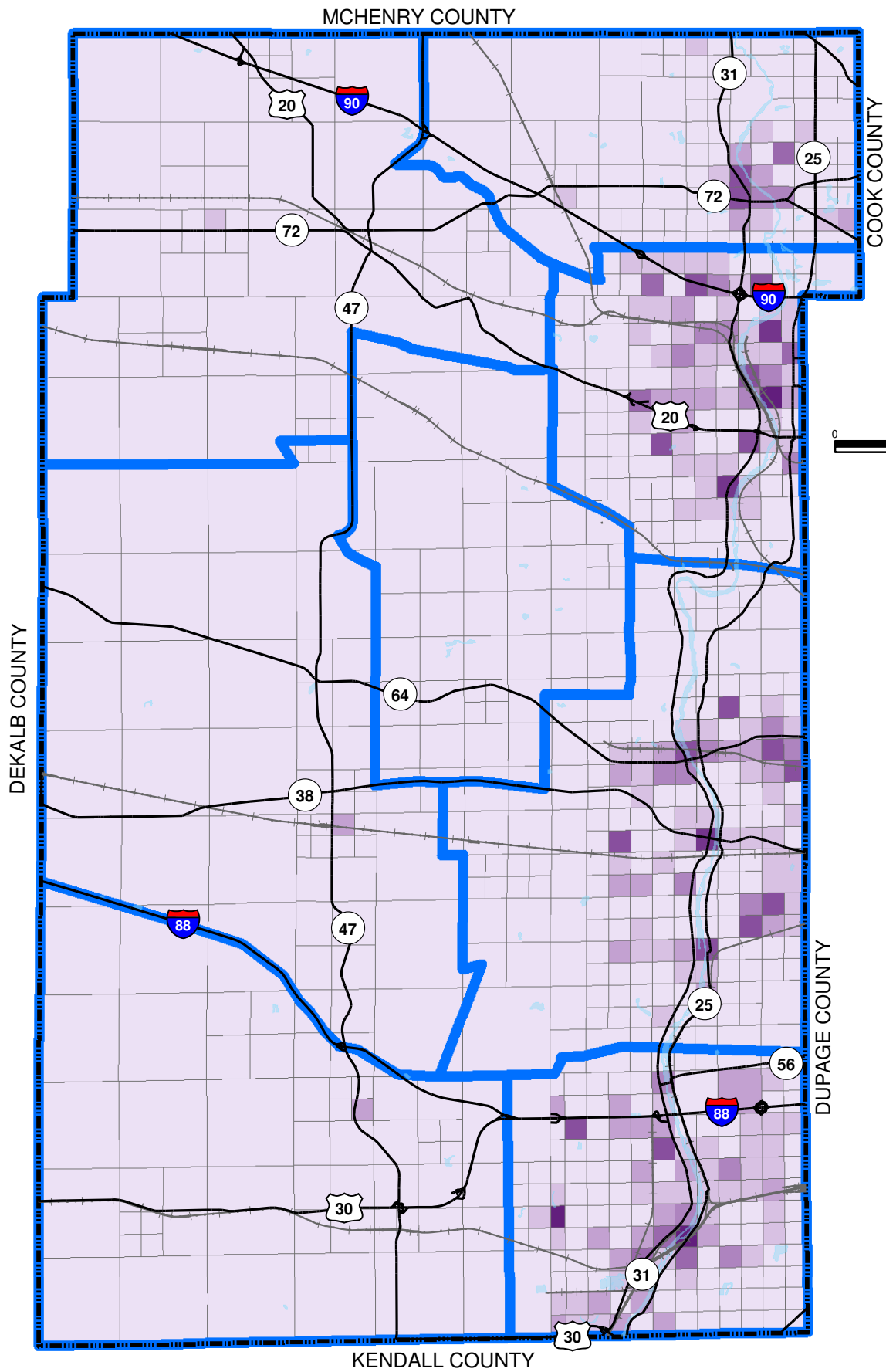
Legend

 Service Area Boundaries

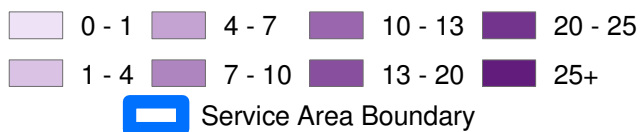
1,234 2023 Population

1,234 Population Change, 2003 to 2023

Figure A-5
2023 Population and
2003 - 2023 Population Change
by Service Area

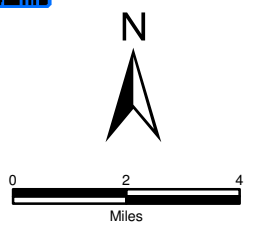
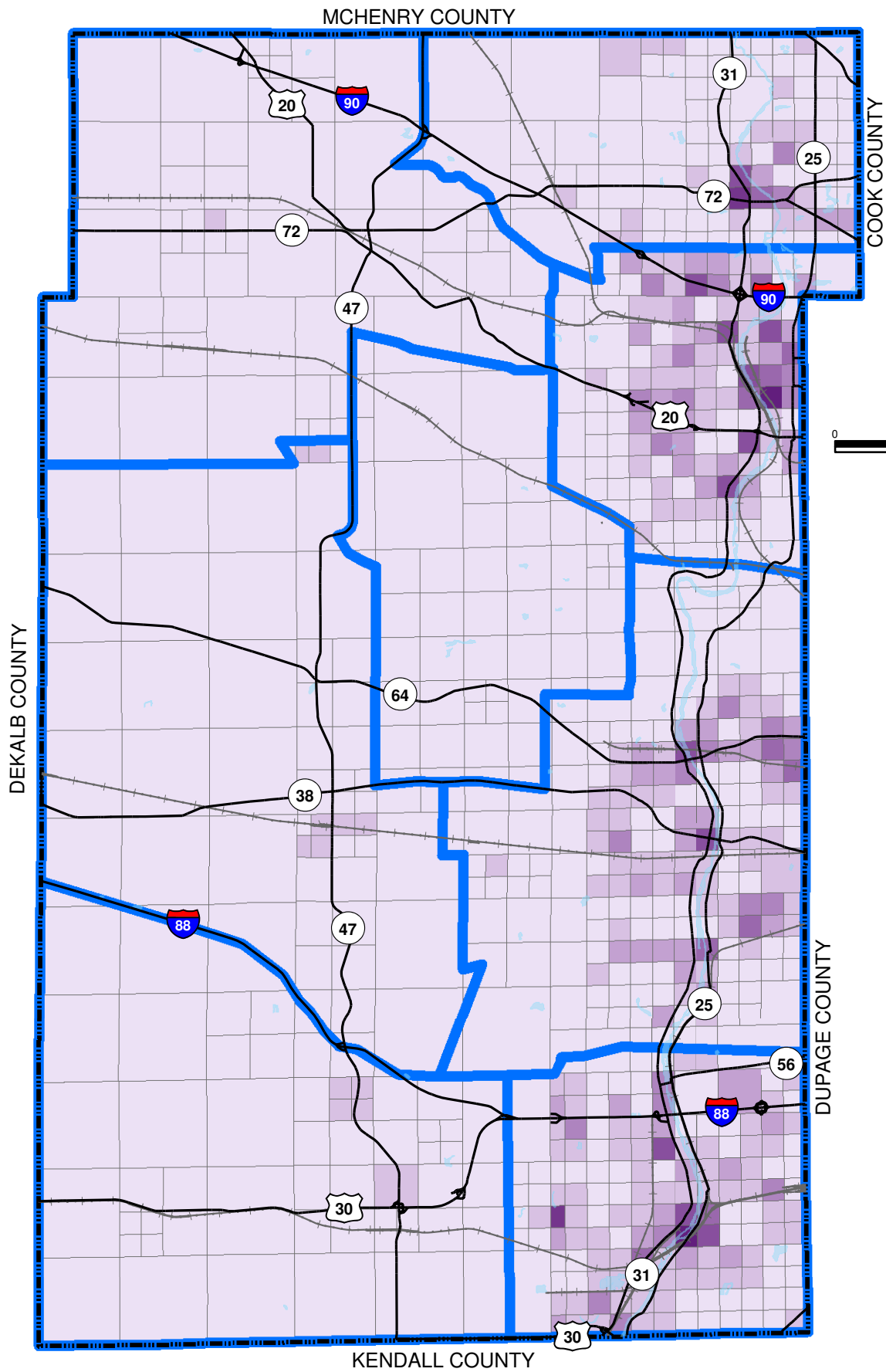


Employment Density (Employees per Acre)



Kane County Comprehensive Road Improvement Plan

Figure A-6
Kane County 2003 Employment Density



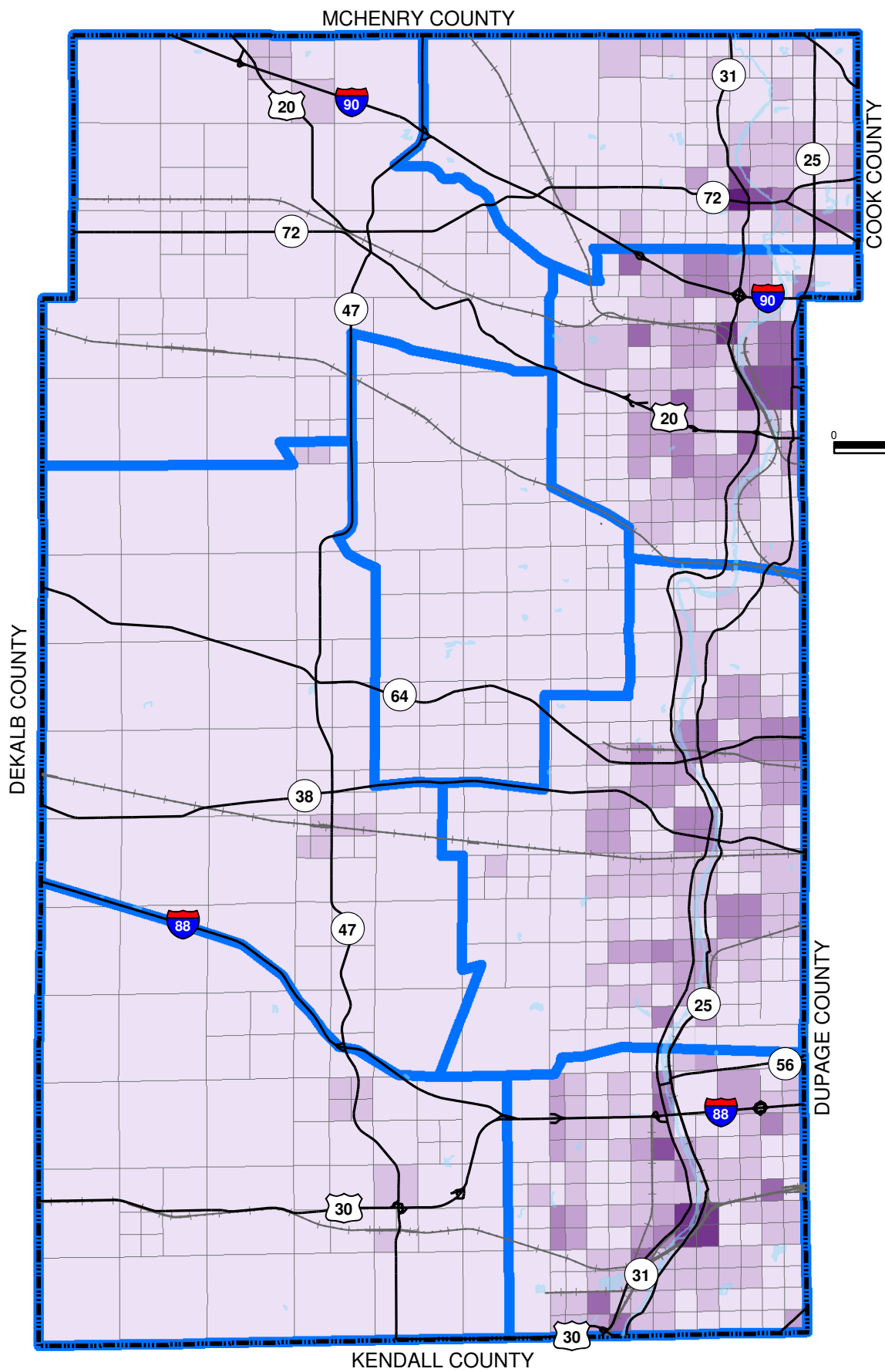
Employment Density (Employees per Acre)

- | | | | | | | | |
|--|-----------------------|--|--------|--|---------|--|---------|
| | 0 - 1 | | 4 - 7 | | 10 - 13 | | 20 - 25 |
| | 1 - 4 | | 7 - 10 | | 13 - 20 | | 25+ |
| | Service Area Boundary | | | | | | |

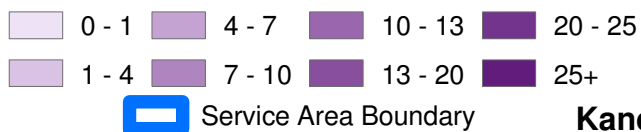
Kane County Comprehensive Road Improvement Plan

Kane County Forecast Year 2013 Employment Density

Figure A-7



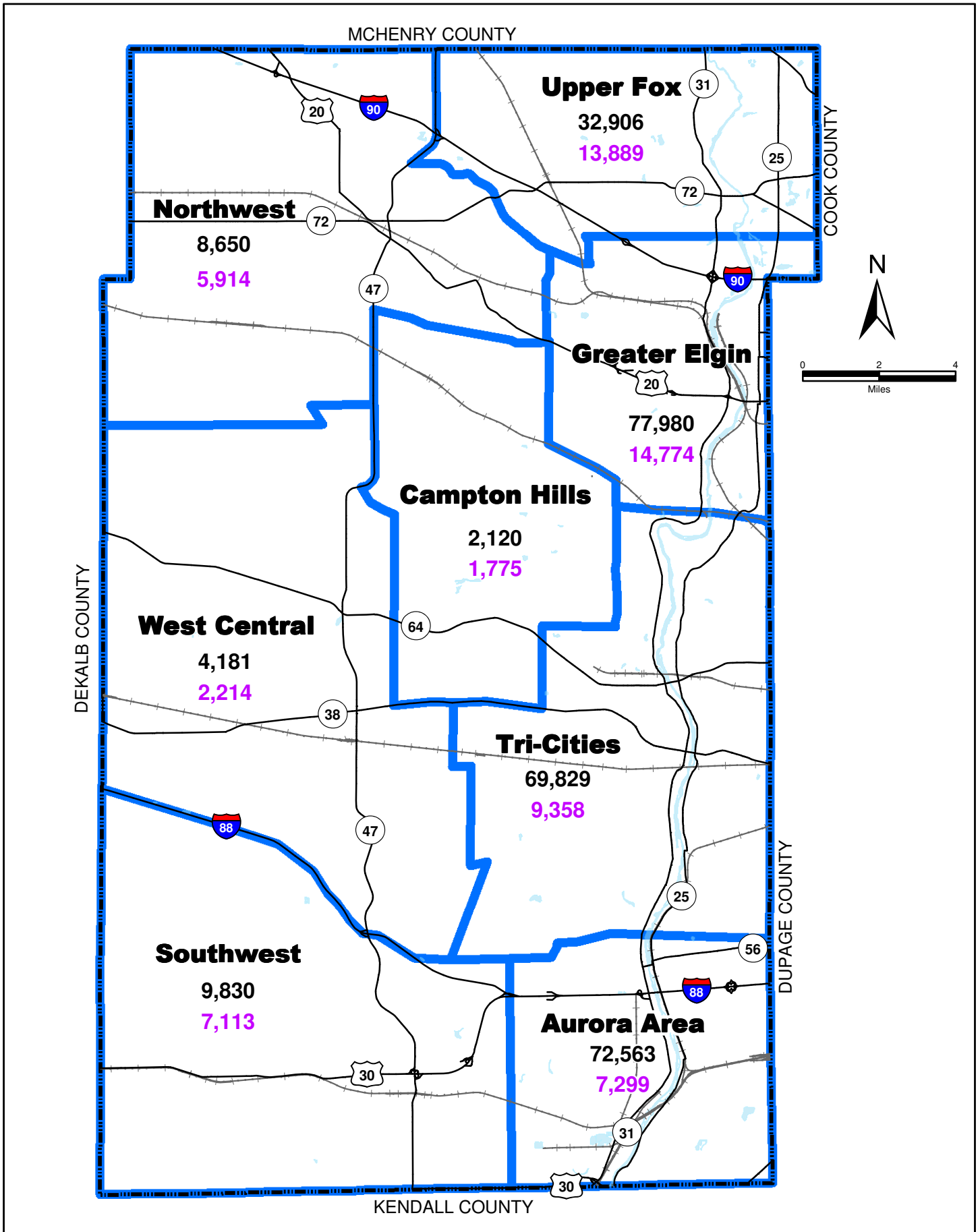
Employment Density (Employees per Acre)



Kane County Comprehensive Road Improvement Plan

Kane County Forecast Year 2023 Employment Density

Figure A-8



Legend

- Service Area Boundaries
- 1,234** 2023 Employment
- 1,234** Employment Change, 2003 to 2023

Figure A-9
2023 Employment and
2003 - 2023 Employment Change
by Service Area